





Andrew Hartley and Her Majesty the Queen. Our exceptional quality and sustained business growth led to the prestigious honour of receiving the Queen's Award for Enterprise in 2015. Our commitment to excellence extends to the selection of materials.

When we founded Hartley & Tissier in 1995, little did we anticipate its success. Hartley & Tissier proudly presents three distinctive products: Flatweave carpets, hand-tufted rugs, and bespoke carpets crafted using the Axminster technique.



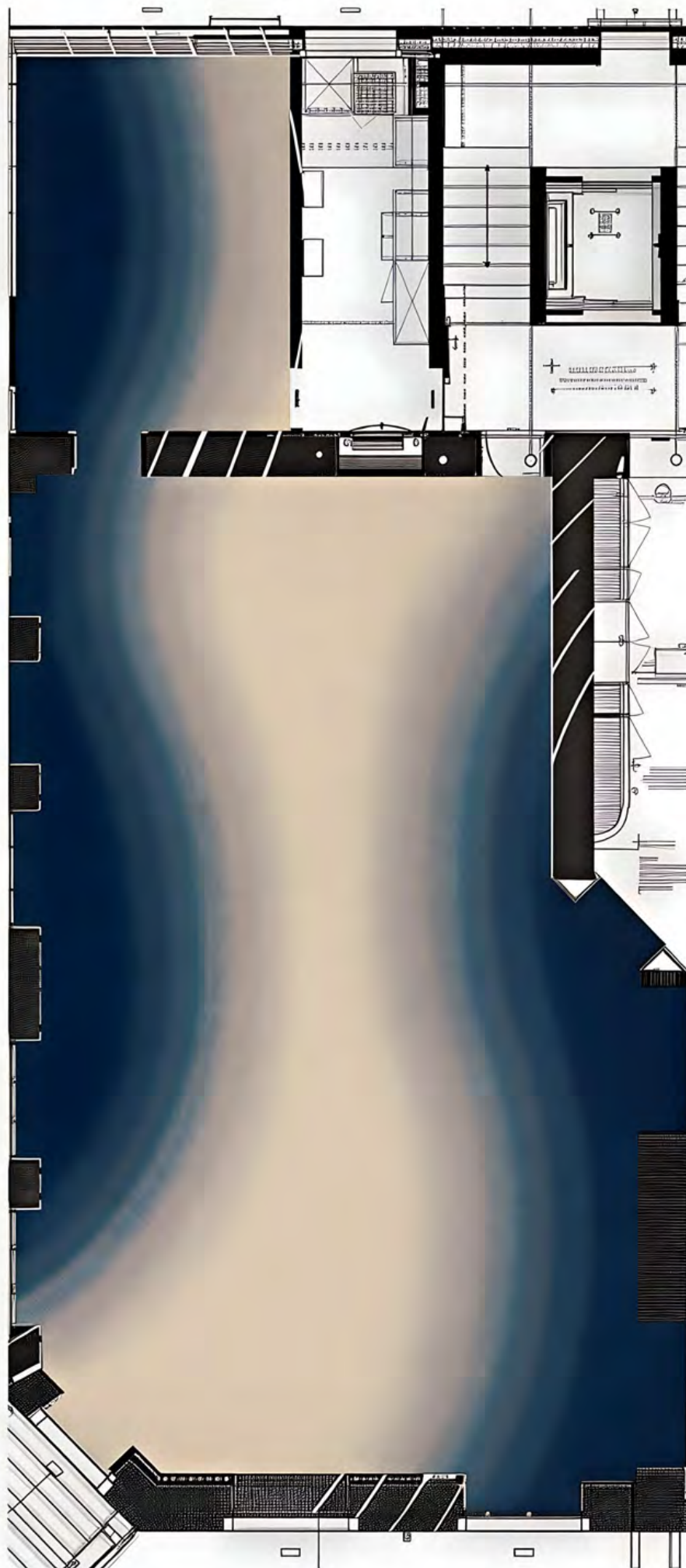
Emilie Torossian, Anouk Dubuc, Stephanie Tissier, & Andrew Hartley, Hartley & Tissier, Paris Team



Le Pavillon de la Reine, restaurant Victoria, Paris



Restaurant L'Arc, Paris



Hotel le Noirmont, Maison Wenger, Jura Switzerland



Hotel le Noirmont, Maison Wenger, Jura Switzerland



Hotel le Narcisse, Paris



Hotel le Narcisse, Paris



Hartley Hand-Tufted Collection, Cowley Manor ,UK



Hartley Hand - Tufted Collection, Cowley Manor, UK



Pavillon du Faubourg Saint Germain, Paris



Pavillon du Faubourg Saint Germain, Paris



Hartley Hand Tufted Rugs, Pav. Fbg. Saint Germain Paris



Hartley Hand Tufted Rugs, Pav. Fbg. Saint Germain Paris



Restaurant Apicius, Paris



Le Pavillon des Lettres, Paris



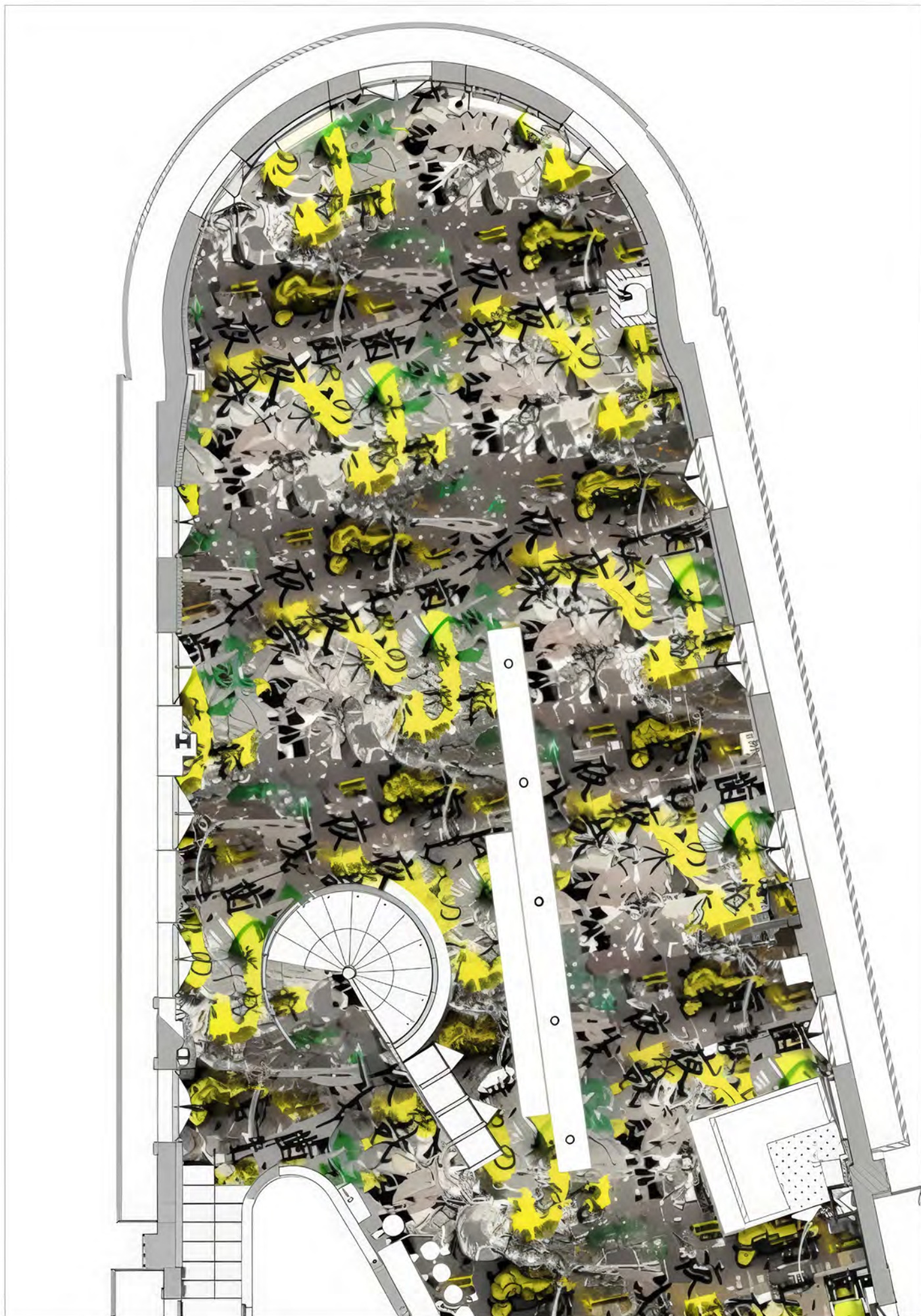
Esprit Saint Germain, Paris



Cinema MK2, Paris



Restaurant, Le Kong - Designed by **Philippe Starck**





Winston Collection, Hotel Quai d'Orléan, Paris



Winston Collection, Hotel Grand Barrail, Jean Philippe Nuel



Winston Collection, Hotel Opera Richepanse, Paris



Hand - Tufted Collection, Hotel Opera Richepanse, Paris

TARTAN COLLECTION - IN STOCK, FROM 20M2



Douglas - In stock



Buchanan - In stock



Jacobite - In stock



Heather - In stock



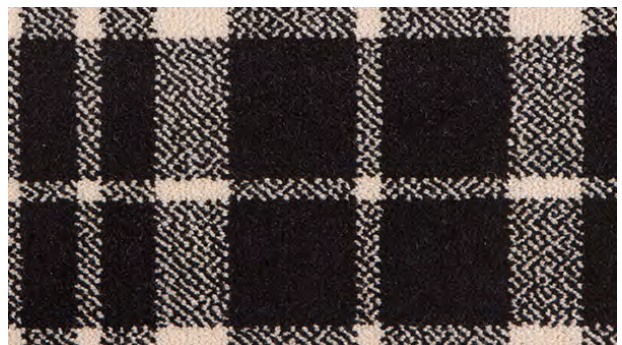
Campbell



MacKenzie



Sinclair

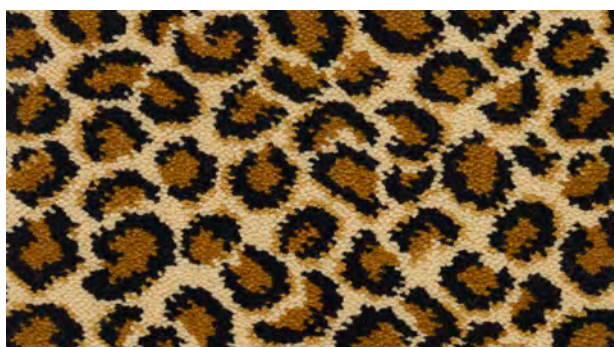


MacGregor

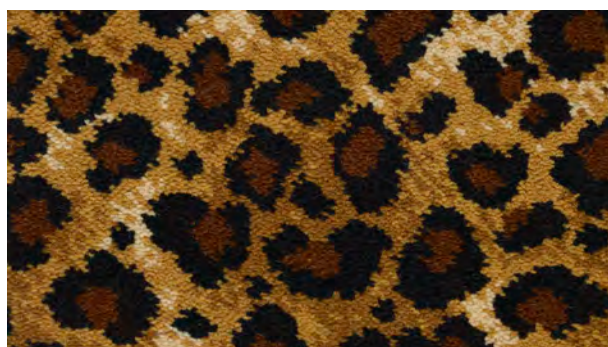
QUALITY
CONSTRUCTION:
BACKING:
PILE WEIGHT:
SUITABILITY:

80% WOOL/ 20% POLYAMIDE
AXMINSTER
ACTION
1200G/M2
HEAVY DOMESTIC - STAIRS, CARPET & RUGS

ANIMAL PRINT COLLECTION - FROM 20M2



Leopard - In stock



Jungle Leopard -In stock



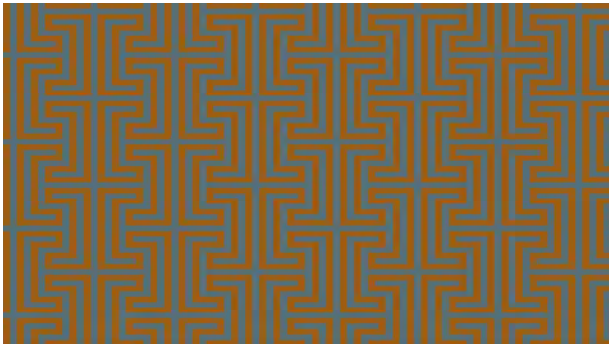
Zebra - In stock



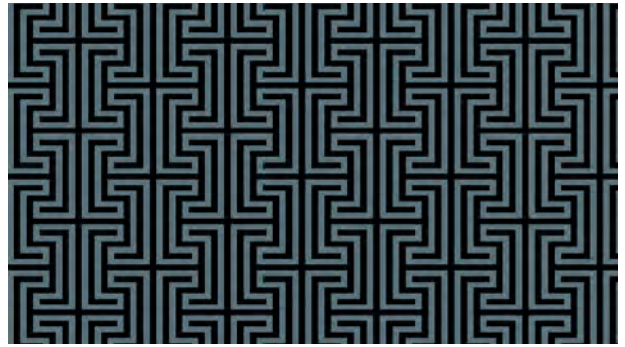
Bespoke Zebra - From 20M2

QUALITY:	80% WOOL/ 20% POLYAMIDE
CONSTRUCTION:	AXMINSTER
BACKING:	ACTION
PILE WEIGHT:	1200G/M2
SUITABILITY:	HEAVY DOMESTIC - STAIRS, CARPET & RUGS

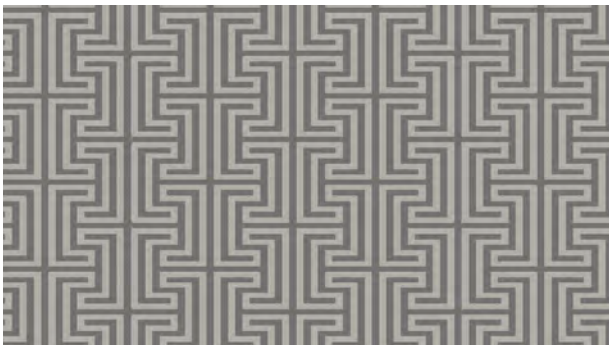
ATHENA COLLECTION, *IN STOCK*, FROM 20M2



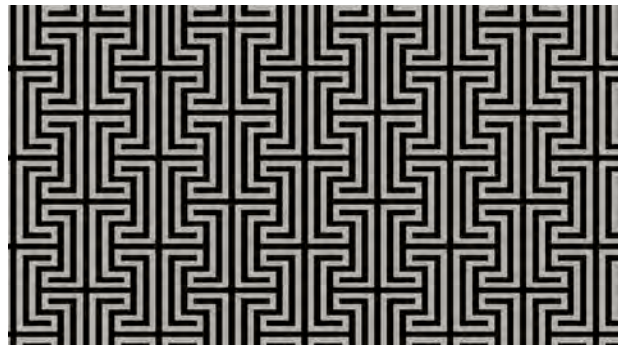
Rust



Teal

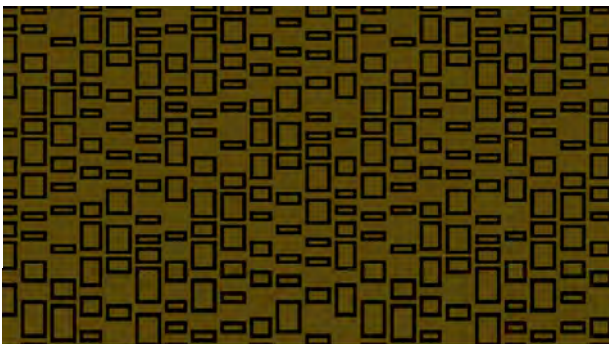


Granite

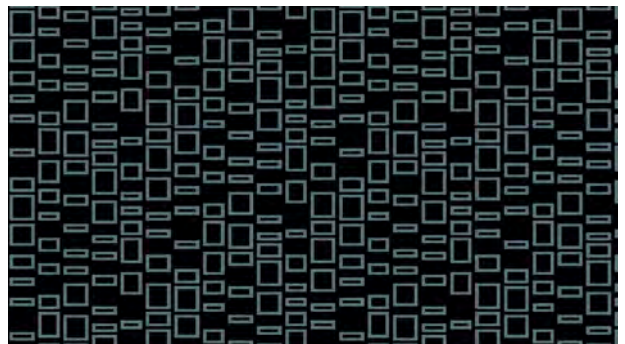


Black

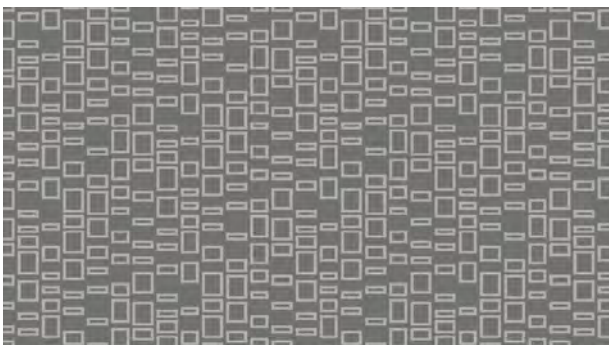
NYX COLLECTION, *IN STOCK*



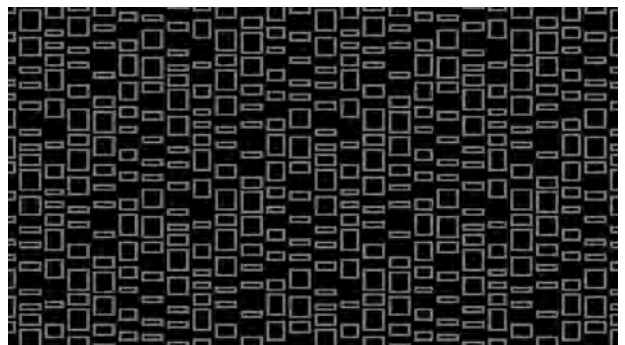
Lime Zest



Teal



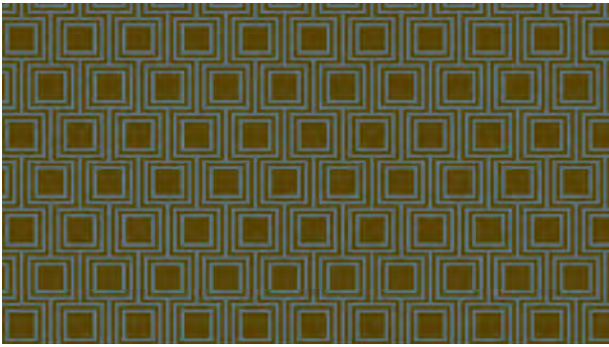
Granite



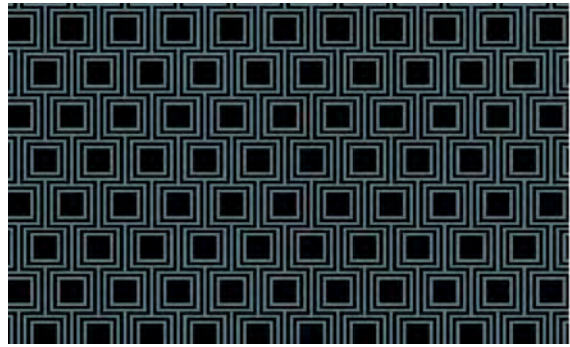
Black

QUALITY:	80% WOOL/ 20% POLYAMIDE
CONSTRUCTION:	AXMINSTER
BACKING:	ACTION
PILE WEIGHT:	1200G/M2
SUITABILITY:	HEAVY DOMESTIC - STAIRS, CARPET & RUGS

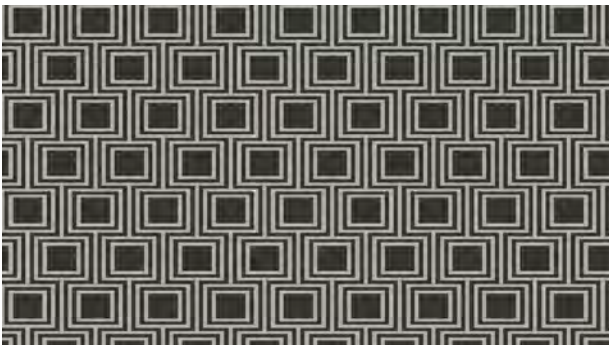
HÉLIOS COLLECTION, IN STOCK, FROM 20M2



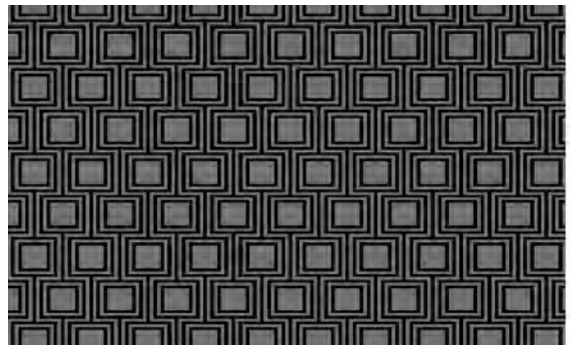
Lime Zest



Teal



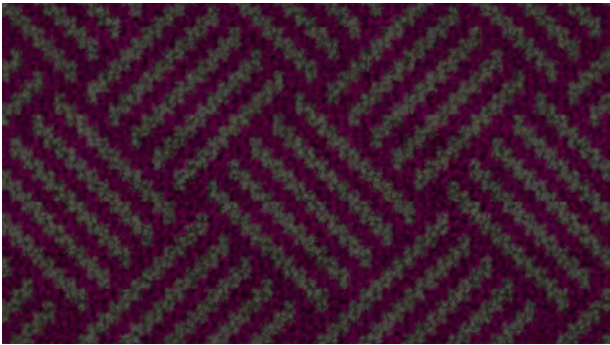
Gunmetal



Black

QUALITY:	80% WOOL/ 20% POLYAMIDE
CONSTRUCTION:	AXMINSTER
BACKING:	ACTION
PILE WEIGHT:	1200G/M2
SUITABILITY:	HEAVY DOMESTIC - STAIRS, CARPET & RUGS

PANIER COLLECTION, *IN STOCK*



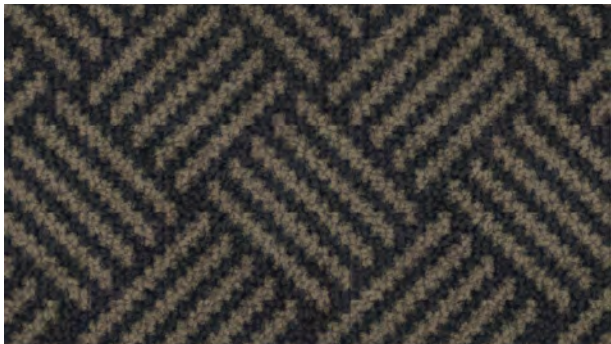
Aphrodite



Carbon



Cobalt



Moonstone



Nickel



Platinum



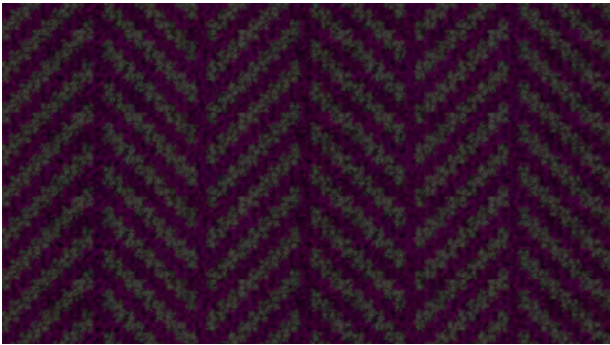
Steel



Taupe

QUALITY:	80% WOOL/ 20% POLYAMIDE
CONSTRUCTION:	TUFTED
BACKING:	ACTION
PILE WEIGHT:	1200G/M2
SUITABILITY:	HEAVY DOMESTIC - STAIRS, CARPET & RUGS

HERRINGBONE COLLECTION, *IN STOCK*



Aphrodite



Carbon



Cobalt



Moonstone



Nickel



Platinum



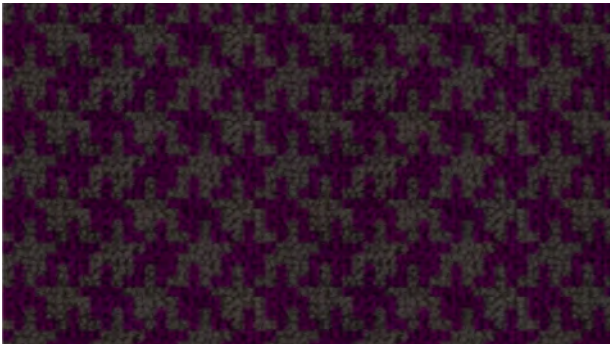
Steel



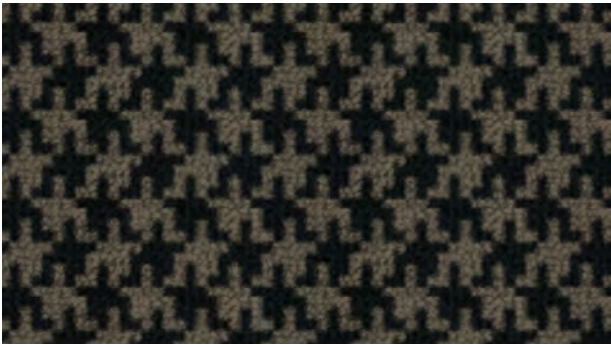
Taupe

QUALITY:	80% WOOL/ 20% POLYAMIDE
CONSTRUCTION:	TUFTED
BACKING:	ACTION
PILE WEIGHT:	1200G/M2
SUITABILITY:	HEAVY DOMESTIC - STAIRS, CARPET & RUGS

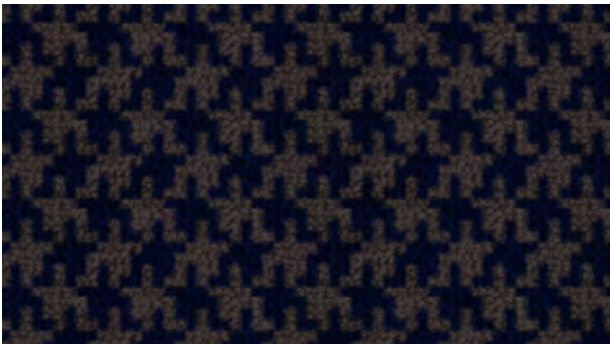
HOUNDSTOOTH COLLECTION - IN STOCK



Aphrodite



Carbon



Cobalt



Moonstone



Nickel



Platinum



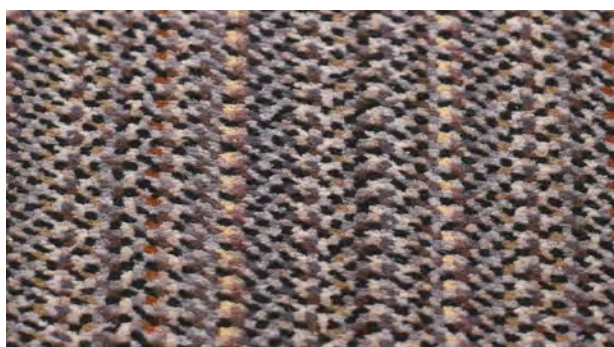
Steel



Taupe

QUALITY:	80% WOOL/ 20% POLYAMIDE
CONSTRUCTION:	TUFTED
BACKING:	ACTION
PILE WEIGHT:	1200G/M2
SUITABILITY:	HEAVY DOMESTIC - STAIRS, CARPET & RUGS

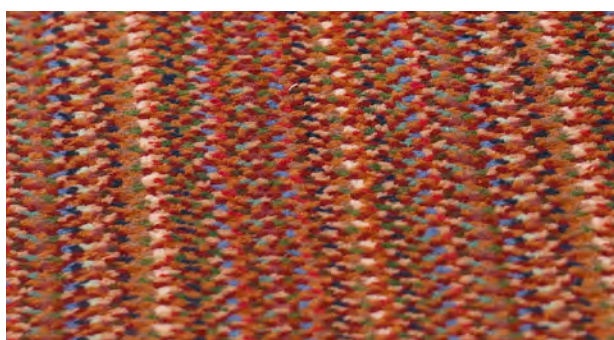
JOSEPHINE COLLECTION - In Stock in 0.69cm



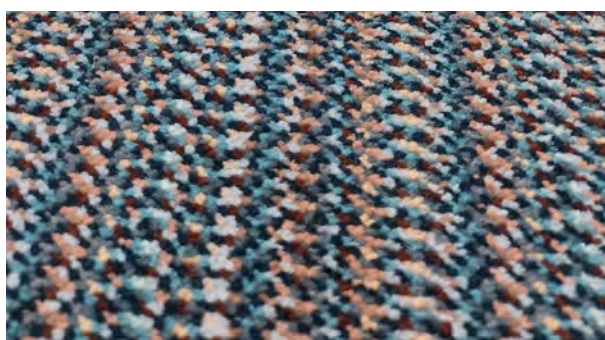
Grey



Green

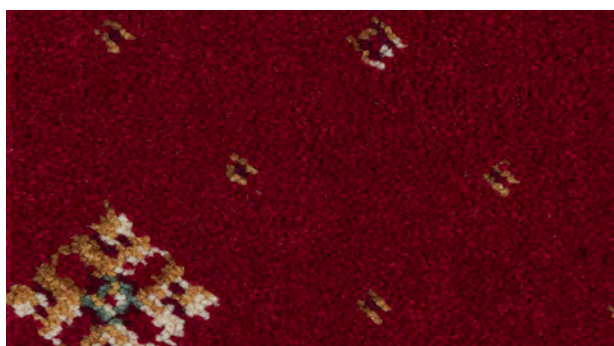


Red



Blue

WINDSOR COLLECTION - In Stock in 4m00



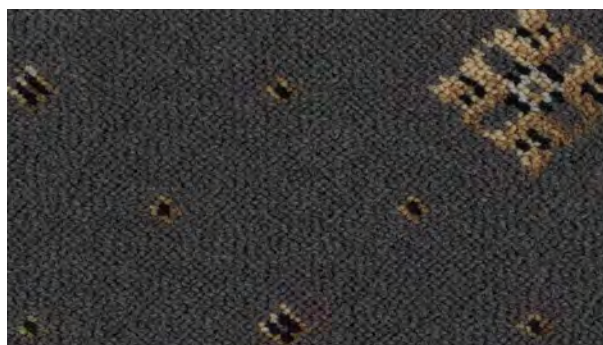
Crown, Red



Crown, Navy



Crown, Willow



Crown, Charcoal

QUALITY:	80% WOOL/ 20% POLYAMIDE
CONSTRUCTION:	TUFTED
BACKING:	ACTION
PILE WEIGHT:	1200G/M2
SUITABILITY:	HEAVY DOMESTIC - STAIRS, CARPET & RUGS

Bespoke Woven Axminster Carpets

Our custom Axminster carpets are available in any design and a wide array of colours, giving you complete creative freedom. Select from our extensive palette and let our expert design team bring your vision to life. Within just one week, our sampling department will deliver tailored design samples, ensuring your ideas translate seamlessly into reality.

Discover our iconic patterns through our innovative Color Tech platform, where you can experiment with personalised colourways and even print them at home. Each carpet is crafted from a premium 80% Wool and 20% Nylon blend, delivering outstanding durability, resilience, and certified fire resistance – making them the perfect choice for both luxury interiors and demanding contract use.

Versatility is at the heart of our offering. Available in multiple widths – 0.69m, 0.91m, 3.66m, and 4.00m – our carpets adapt beautifully to any setting, whether for wall-to-wall installations, elegant stair runners, or stylish bespoke rugs. We also provide a range of refined finishing options to suit your specific project.

Proudly manufactured in the UK, all carpets are produced with a fast turnaround of just 6 weeks, starting from a minimum order of 20m². For added convenience, we offer professional fitting services across the UK, France, and Switzerland, alongside reliable global delivery.





Hartley & Tissier LTD UK
24 Knightsbridge,
Business Centre Knightsbridge
Cheltenham, GL51 9TA
+44 (0) 1242680346
sales@hartleytissier.com

Hartley France
87 Rue de Monceau,
75008 Paris
+33 (0) 1 53 04 06 86
paris@hartleytissier.fr

Hartley Sarl Switzerland
Rue du valentin 34 et demi,
1004 Lausanne
+41 (0) 21 218 09 46
josephine@hartleytissier.com