



Design: Tamise II |

Designed in France, Made in Great Britain



Winston Collection

Our bespoke woven **Axminster** carpets are available in any design with a large choice of colours. Choose from an extensive palette of colours and entrust our design team with your vision. **Within a week**, our sampling department will deliver design samples, ensuring your ideas come to life seamlessly.

Explore our iconic designs on our color tech platform, allowing you to create personalized colorways for at-home printing. Crafted from an **80% Wool and 20% Nylon** blend, our axminster carpets boast exceptional durability and resistance. Certified as fire-resistant, our high-end quality carpets are ideal for contract use.

Versatility is key, and our carpets are available in multiple widths—**0.69m, 0.91m, 3.66m, and 4.00m**—providing flexibility to complement any surface. Whether you envision wall-to-wall elegance, sophisticated stair runners, or chic rugs, our Axminster Carpets offer diverse finishing options for both runners and rugs.

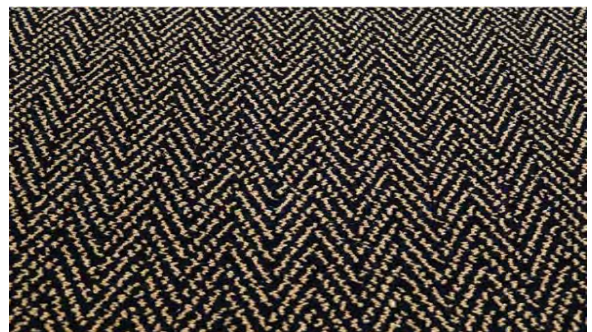
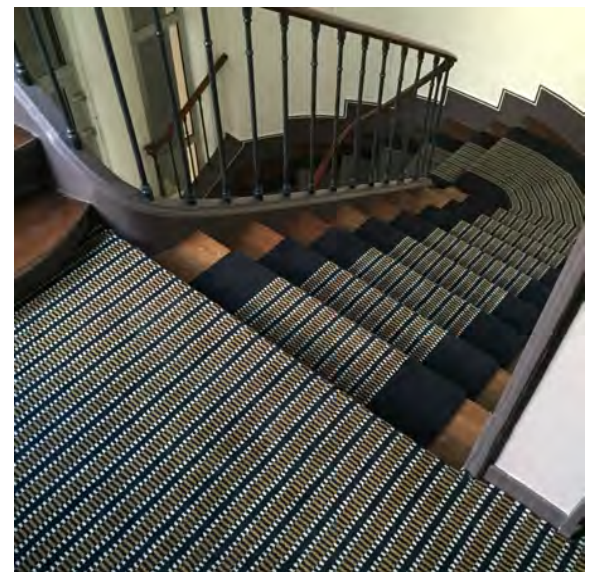
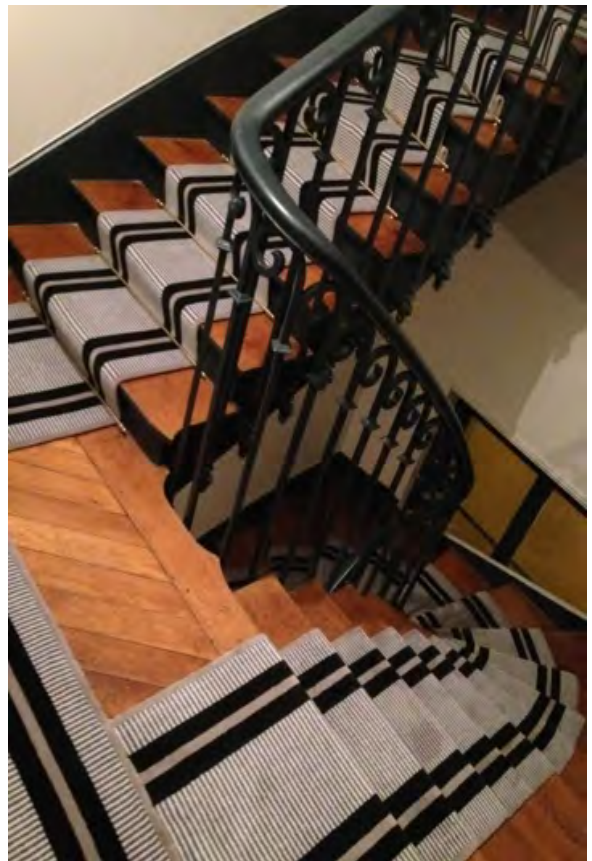
All our products are proudly manufactured in the **U.K.** with a swift turnaround of just **6 weeks with a minimum order of 20M2**. For your convenience, we extend our fitting services to the U.K., France, and Switzerland, and ensure global deliveries.

Immerse yourself in our complete creative flooring collections by visiting our website. To experience the tactile beauty of our carpets firsthand, request a sample today. Redefine your space with the unparalleled craftsmanship of our bespoke Axminster carpets.

Make your own carpet or rug by scanning our QR code:

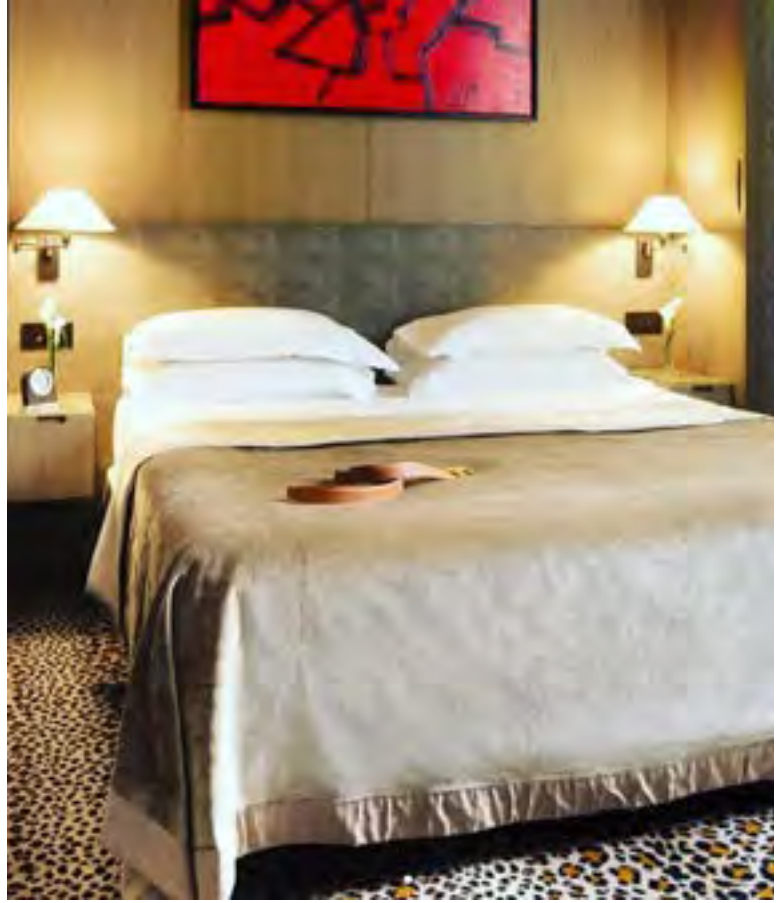


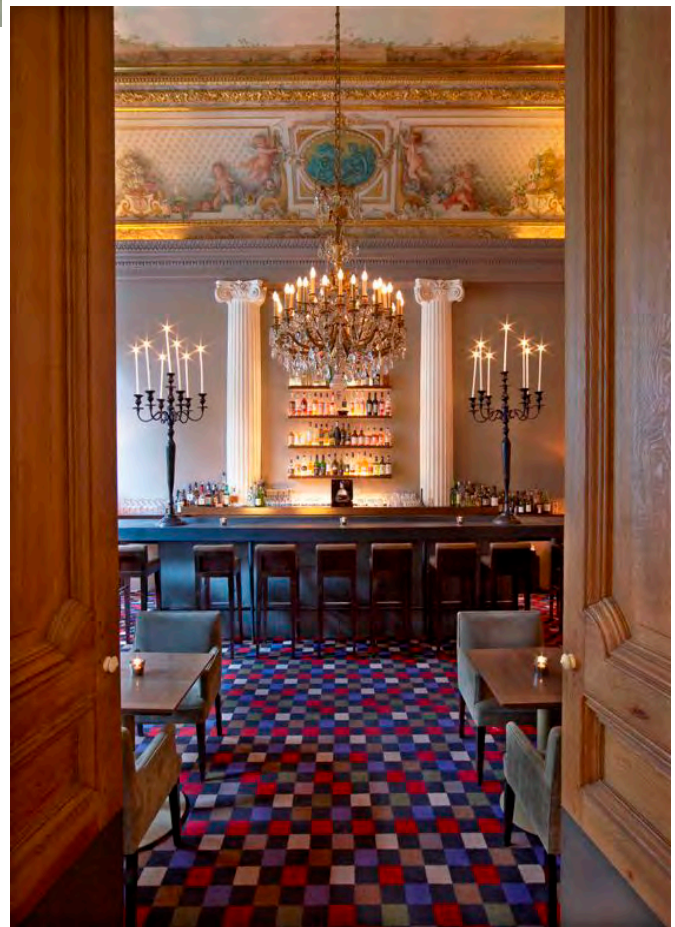




1. Large Herringbone 2. Bespoke PNT 3. Safari design/ Residential 4. PNUK border runner 5. Small Herringbone

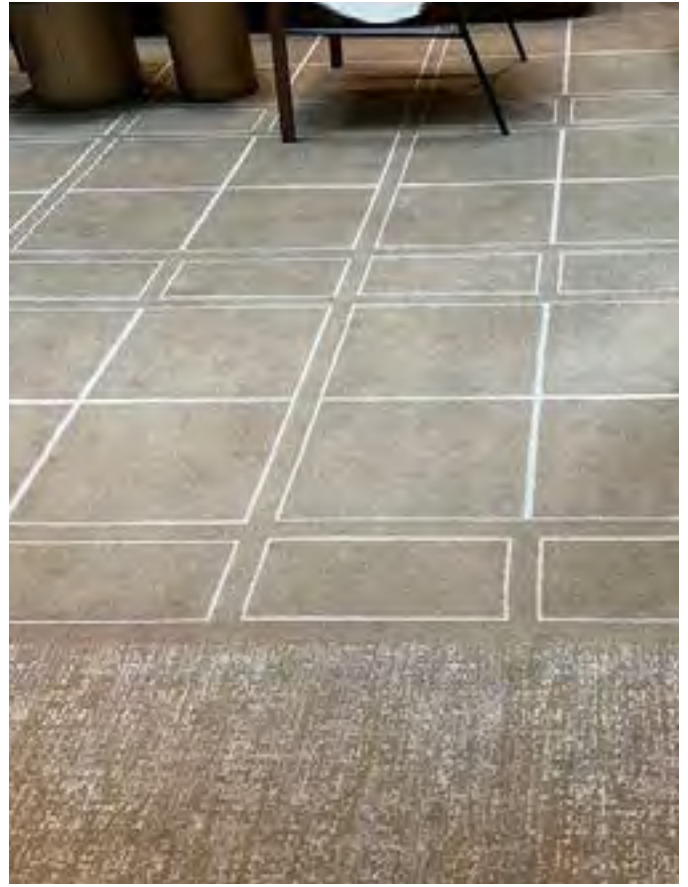
Hôtel Esprit Saint Germain





1. PNUK | Residential 2. Houndstooth 3. Zebra Willow 4. Restaurant Apicius

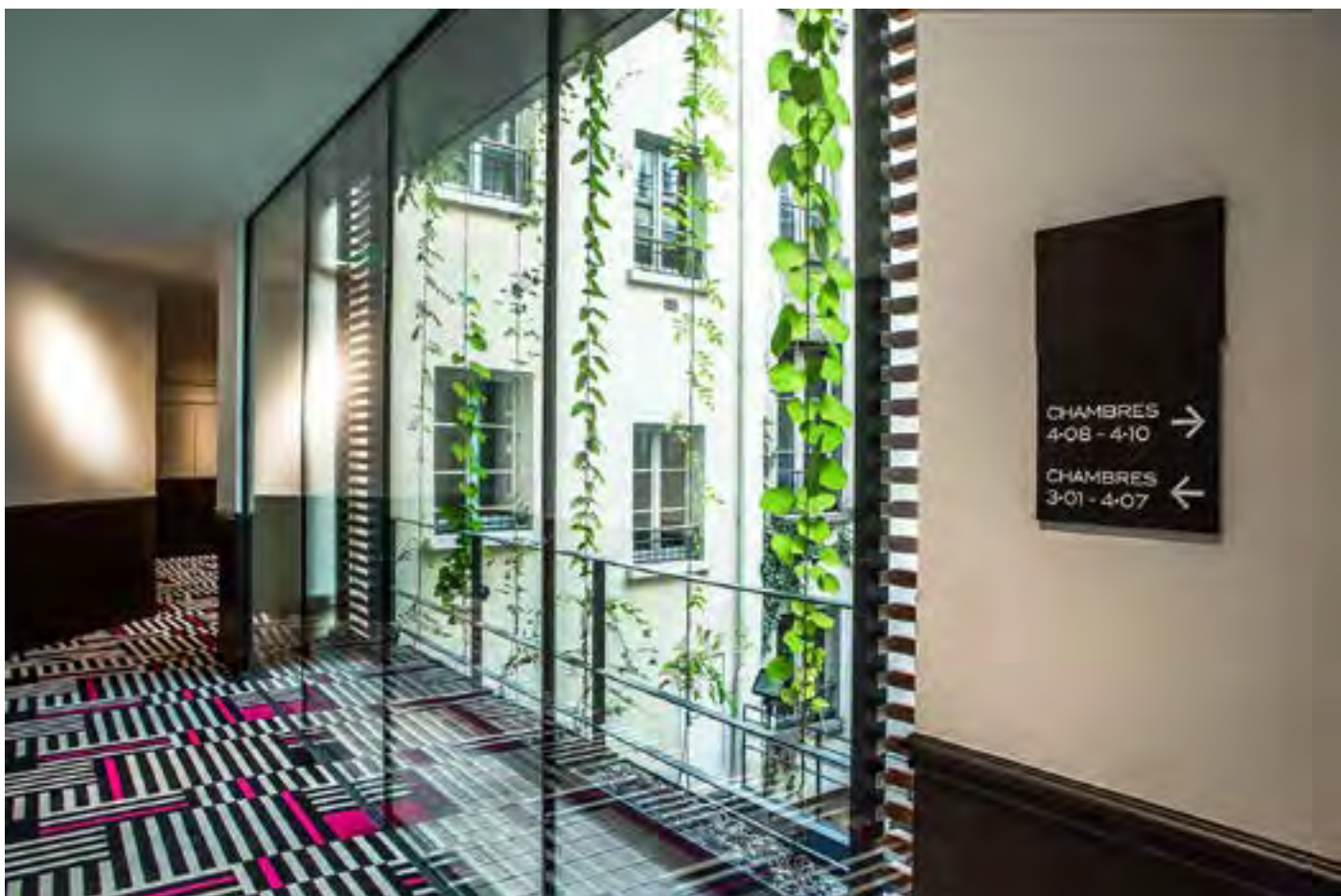
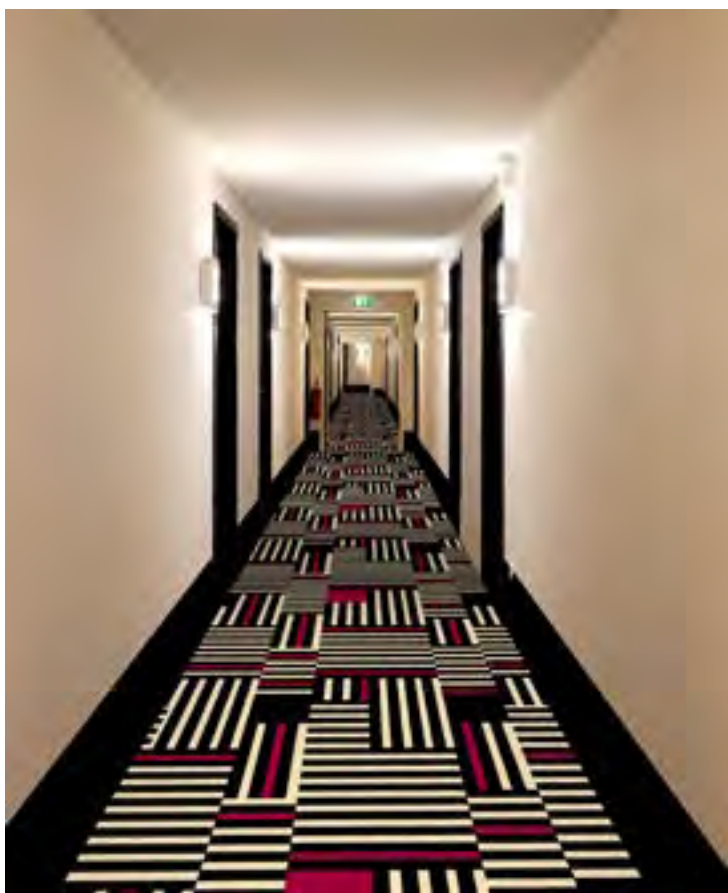
Pavillon du Faubourg Saint Germain





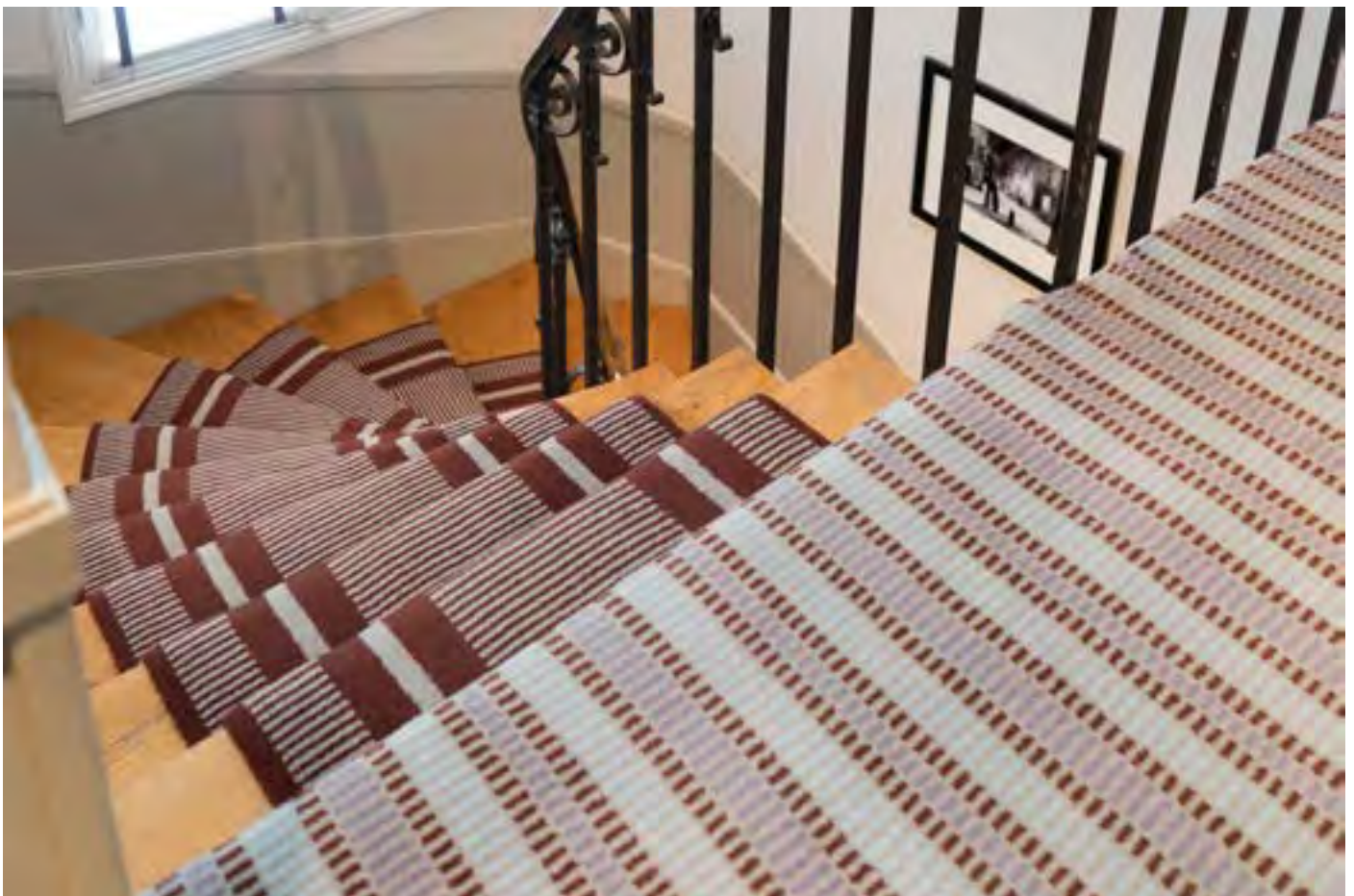
1. Round | *Hotel Petit Moulin* 2. Large Escargot | *Hotel d' Aubusson* 3. Bespoke | *Hotel Narcisse Blanc* 4. Pento | *Showroom*

Hôtel Fauchon



CHAMBRES
4-08 - 4-10 →
CHAMBRES
3-01 - 4-07 ←

Hôtel Aiglon



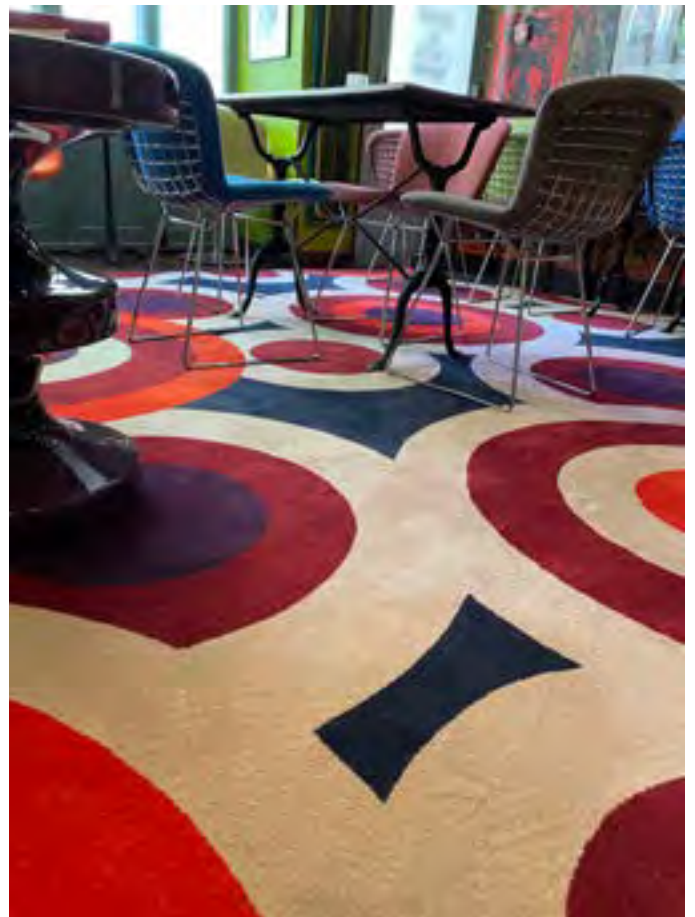
Hôtel St. Père





1.Hotel le Narcisse 2. Flower/Hotel Paris 3. Bespoke runner/Pavillon Vandome 4.Bespoke Flower 5. Hex Black & White

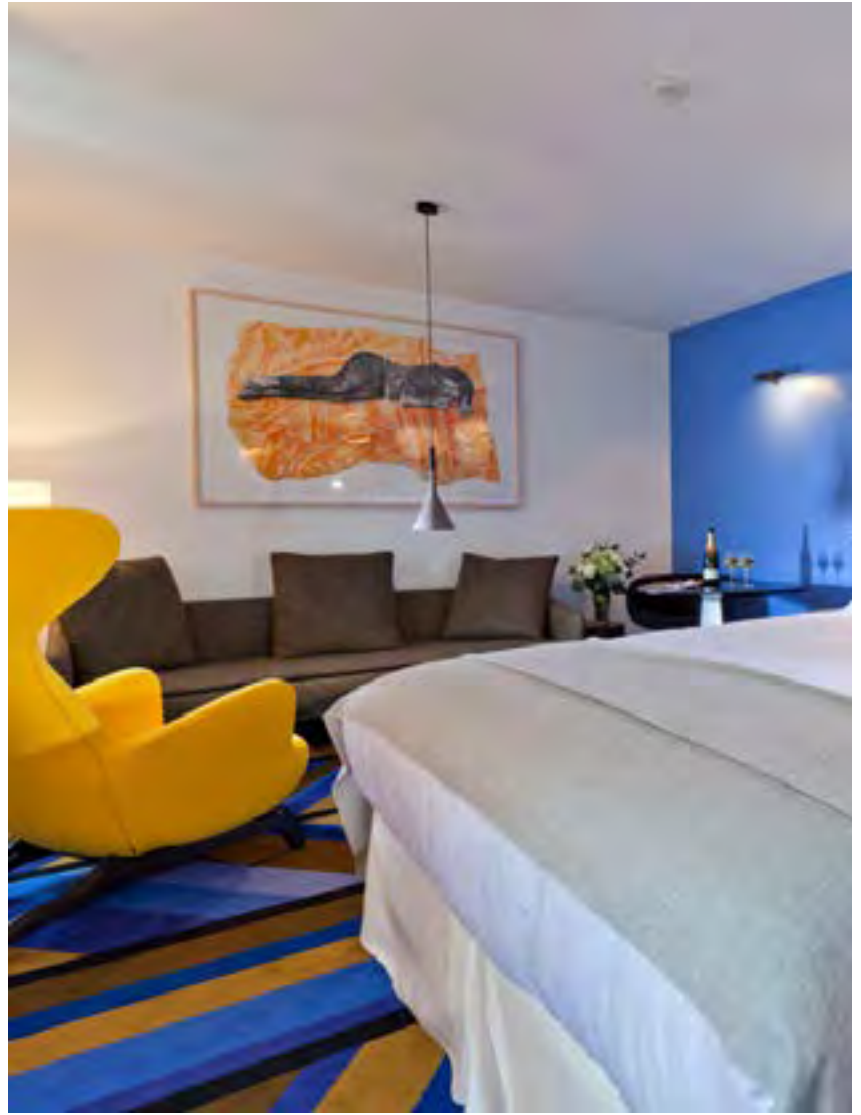
Hôtel Le petit moulin



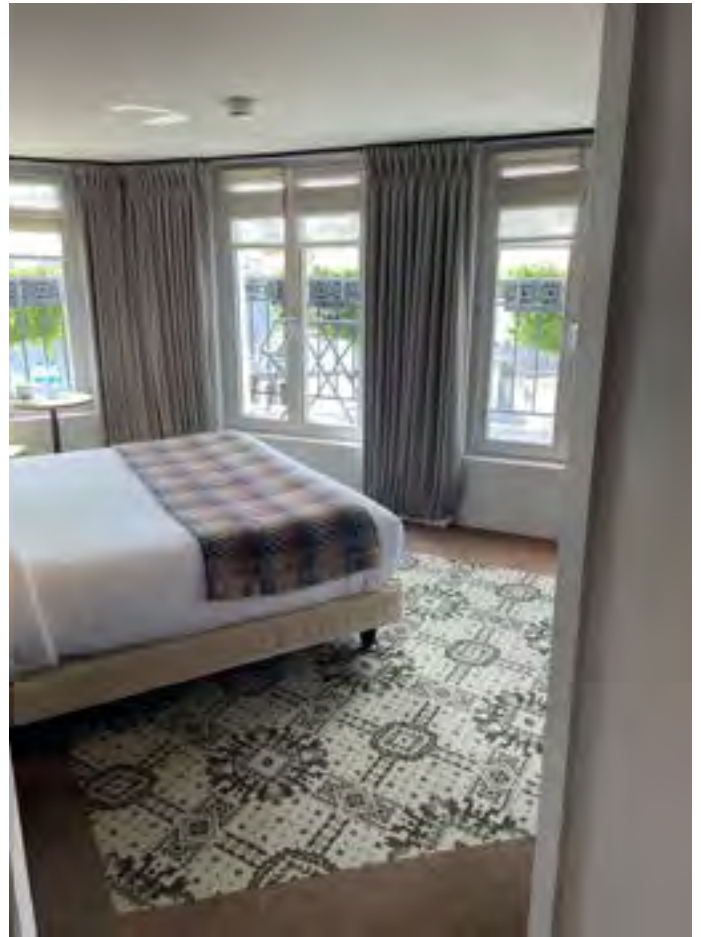
Hôtel Mansart



Hôtel le ministère



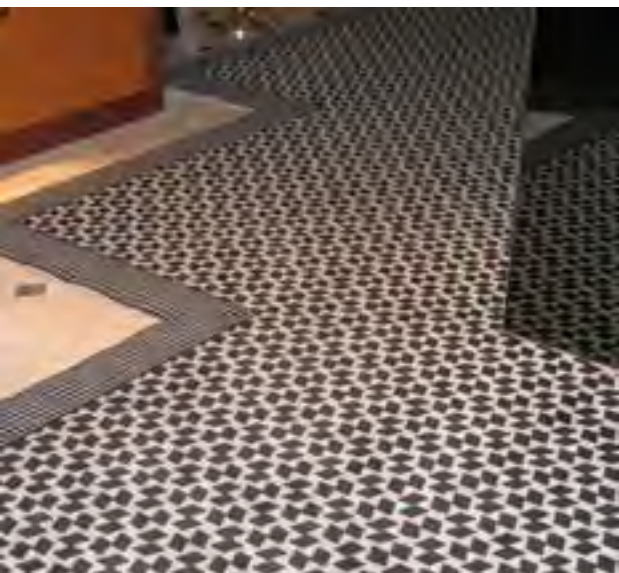
Pavillon des lettres



Domaine de la Tortinière



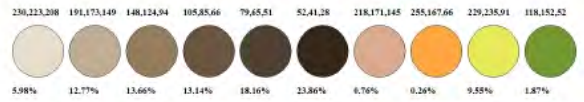
Hôtel Jules



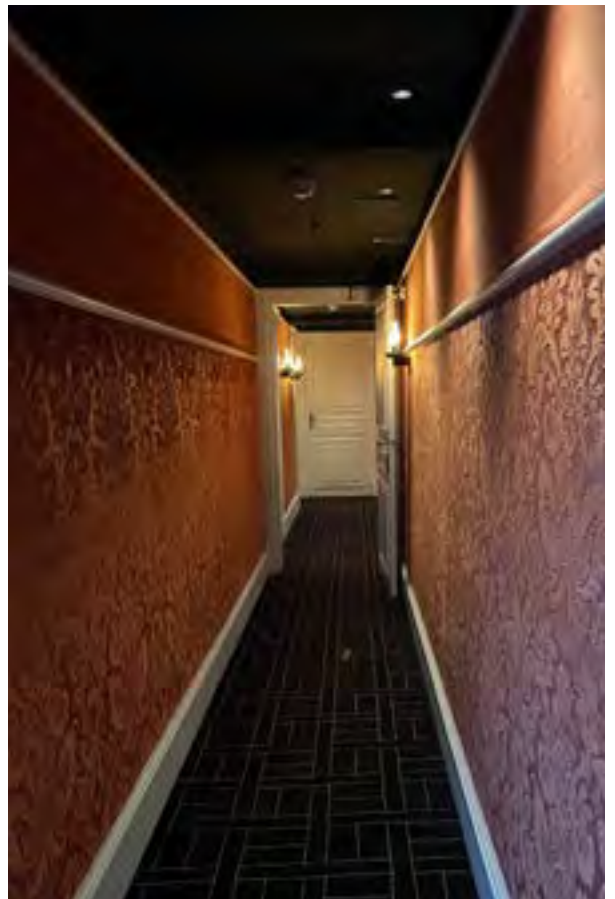
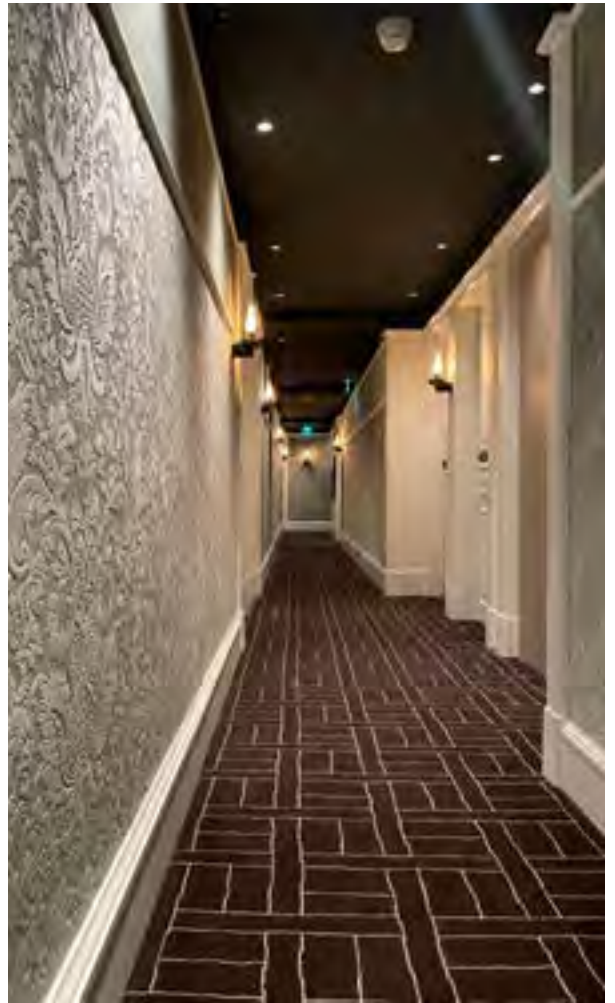
Hôtel des Bergues, Four seasons, Genève



Restaurant, Le Kong - Designed by philippe starck



Hôtel Pavillon de la Reine





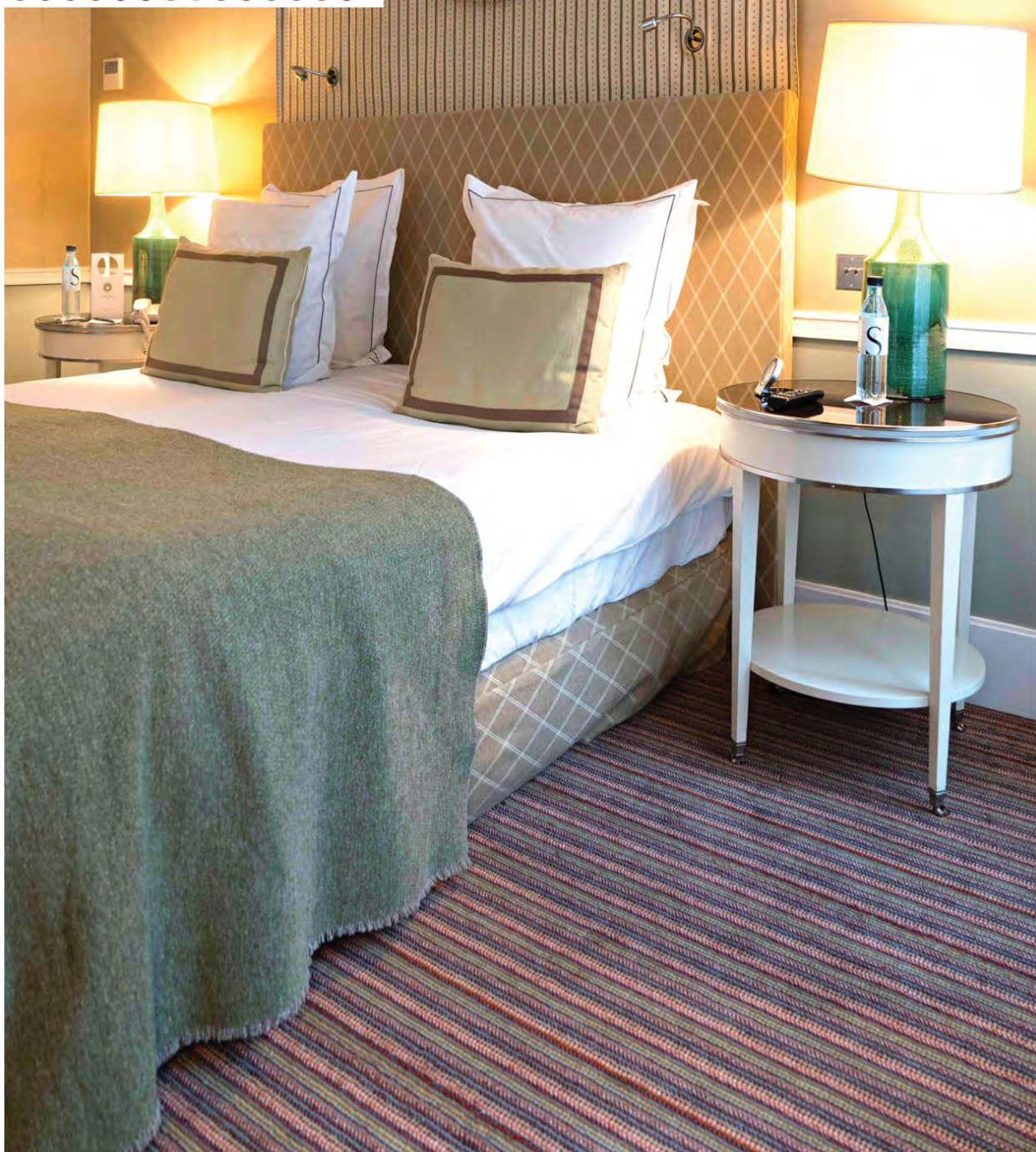
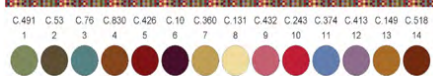
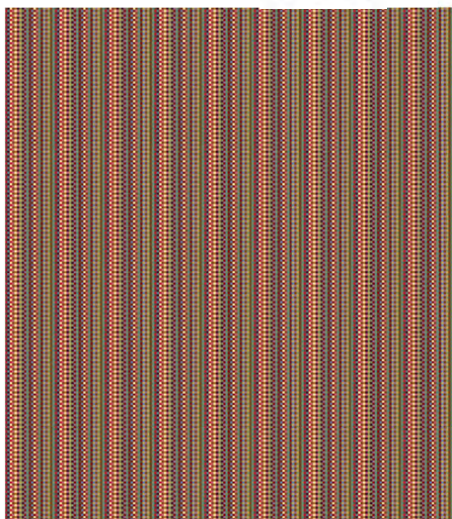
Parquet | *Hotel Pavillon de la Reine*



PNT & Diamond Rug/ Hotel Paris

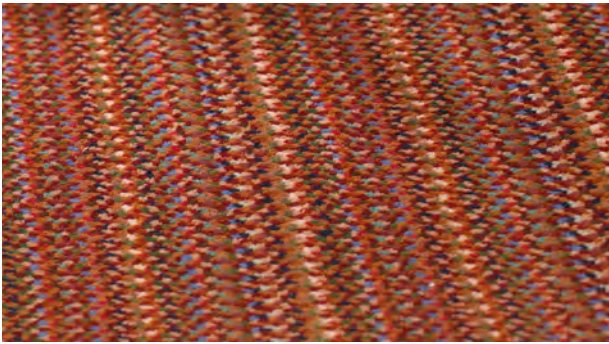


Striped Herringbone/ 5* Hotel



Josephine Green / 5* Hotel

JOSEPHINE COLLECTION - IN STOCK



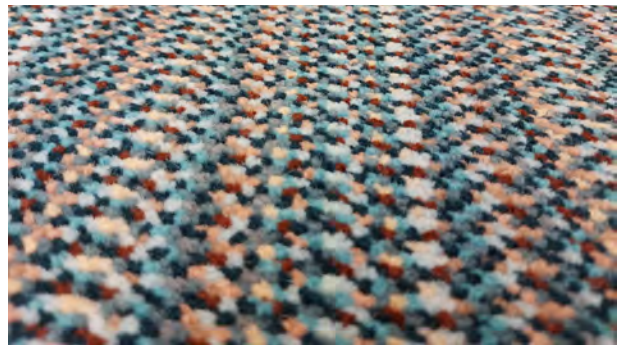
BROWN



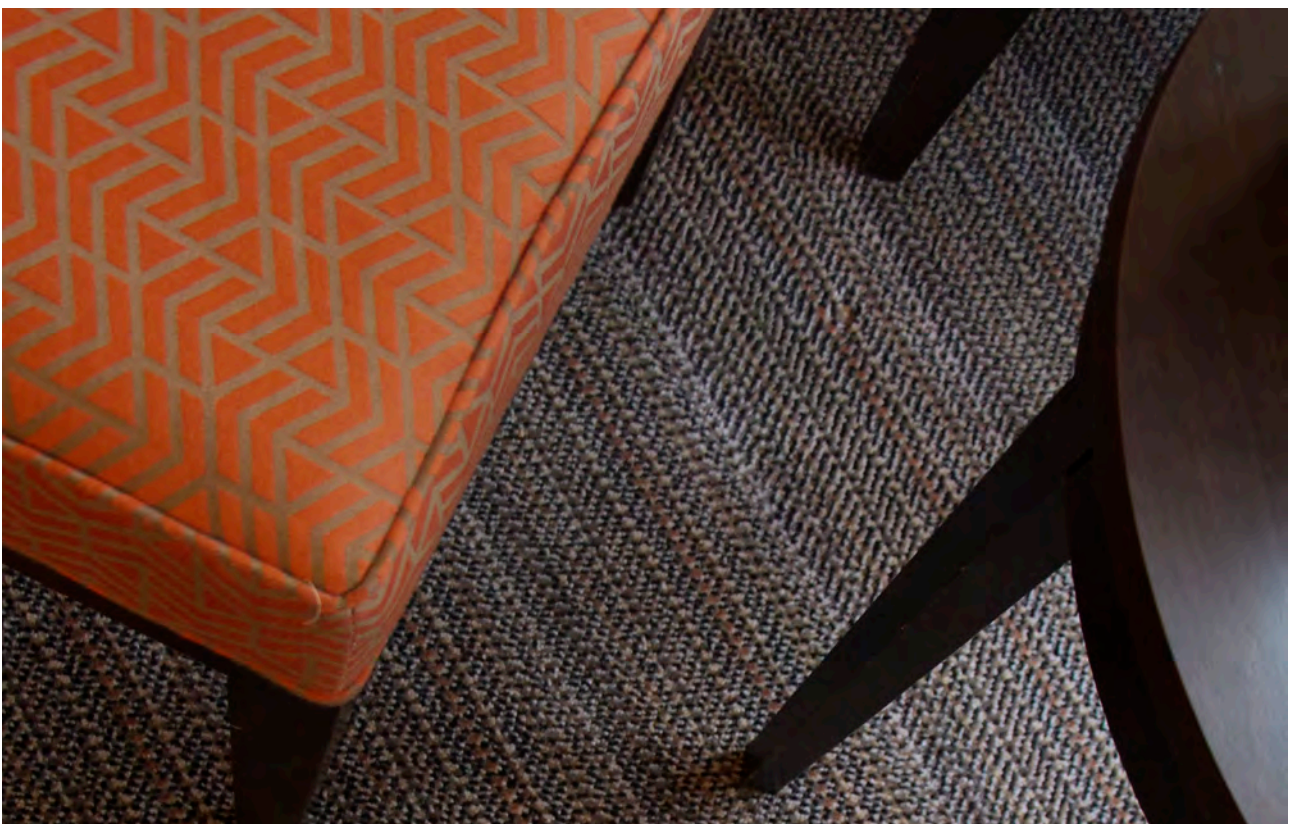
GREEN



GREY



AQUA



JOSEPHINE GREY, 5* HOTEL PARIS

Width / Largeur:	69cm
Quality/Qualité:	100 % Wool / 100 % Laine
Construction / Fabrication:	Tufted / Tufté
Backing / Dossier:	Action
Pile weight /Poid du velour	1200G/M2
Suitability / Utulisation	Heavy domestic - Stairs, Carpet & Rugs / Passage intensif - Escalier, Moquette et Tapis

VELVET COLLECTION - IN STOCK



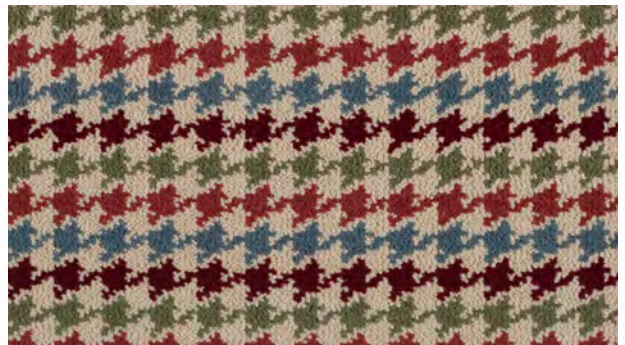
HELSINKI



OSLO



LONDON



PARIS



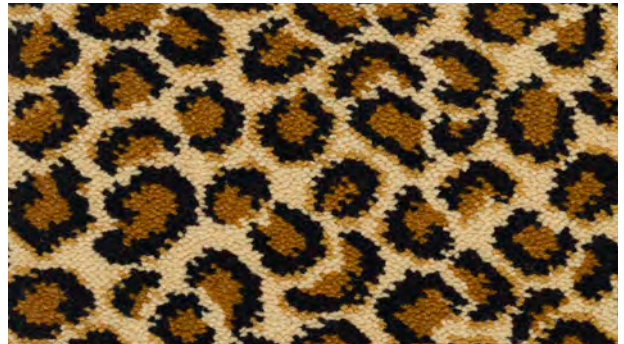
MILAN

Width / Largeur:	4M00
Quality/Qualité:	80 % Wool/ 20% polyamide, 80% Laine/ 20% Polyamide
Construction / Fabrication:	Tufted / Tufté
Backing / Dossier:	Action
Pile weight /Poid du velour	1200G/M2
Suitanability / Utulisation	Heavy domestic - Stairs, Carpet & Rugs / Passage intensif - Escalier, Moquette et Tapis

SAFARI COLLECTION - IN STOCK



LEOPARD



OCELOT



ZEBRA



ZEBRA - Bespoke from 20m²

Width / Largeur:	4M00
Quality/Qualité:	80 % Wool/ 20% polyamide, 80% Laine/ 20% Polyamide
Construction / Fabrication:	Tufted / Tufté
Backing / Dossier:	Action
Pile weight /Poid du velour	1200G/M2
Suitability / Utulisation	Heavy domestic - Stairs, Carpet & Rugs / Passage intensif - Escalier, Moquette et Tapis

TARTAN COLLECTION - IN STOCK



BAIRD



BELL



DUNLOP



FLEMING



MAPLE



NAISMITH



NAPIER



WATT

Width / Largeur:	4M00
Quality/Qualité:	80 % Wool/ 20% polyamide, 80% Laine/ 20% Polyamide
Construction / Fabrication:	Tufted / Tufté
Backing / Dossier:	Action
Pile weight / Poid du velour	1200G/M2
Suitability / Utilisation	Heavy domestic - Stairs, Carpet & Rugs / Passage intensif - Escalier, Moquette et Tapis

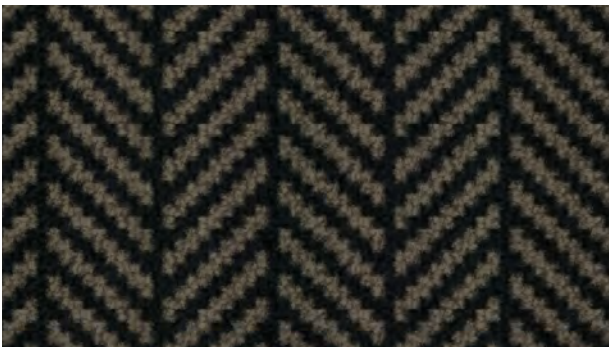
HERRINGBONE COLLECTION - IN STOCK



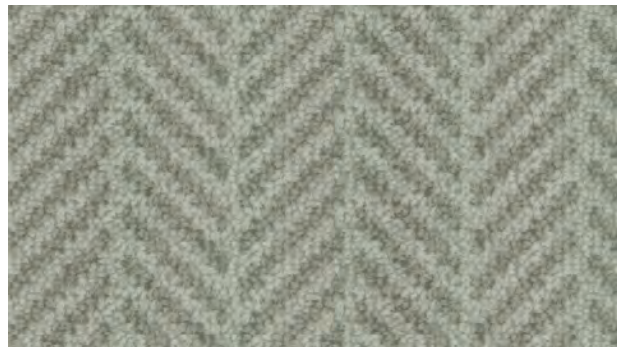
APHRODITE



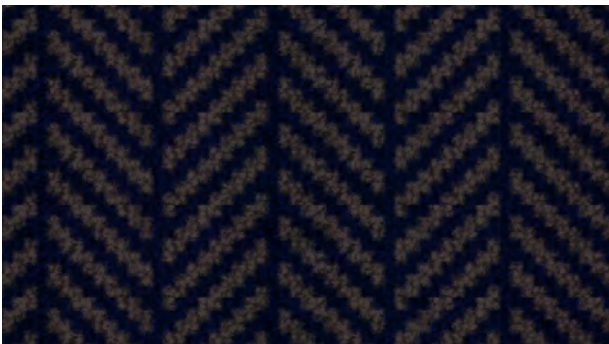
NICKEL



CARBON



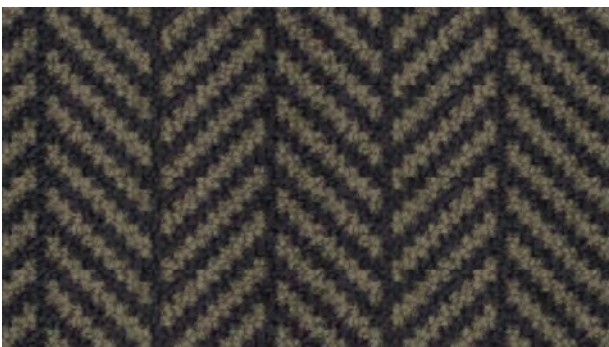
PLATINIUM



COBALT



STEEL



MOONSTONE



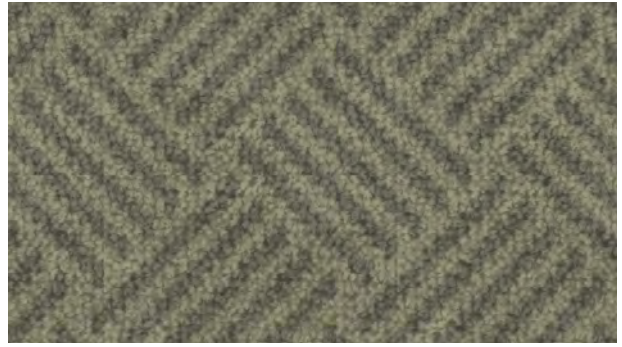
TAUPE

Width / Largeur:	4M00
Quality/Qualité:	80 % Wool/ 20% polyamide, 80% Laine/ 20% Polyamide
Construction / Fabrication:	Tufted / Tufté
Backing / Dossier:	Action
Pile weight /Poid du velour	1200G/M2
Suitability / Utulisation	Heavy domestic - Stairs, Carpet & Rugs / Passage intensif - Escalier, Moquette et Tapis

PANIER COLLECTION - IN STOCK



APHRODITE



NICKEL



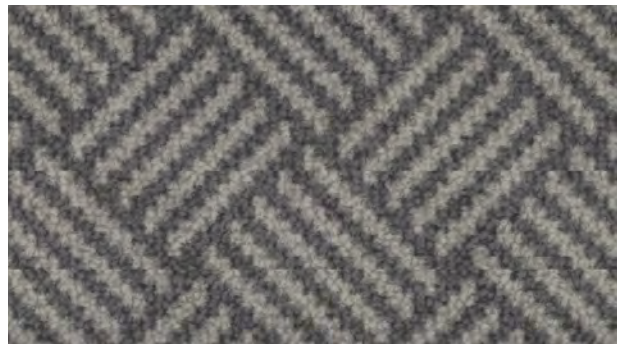
CARBON



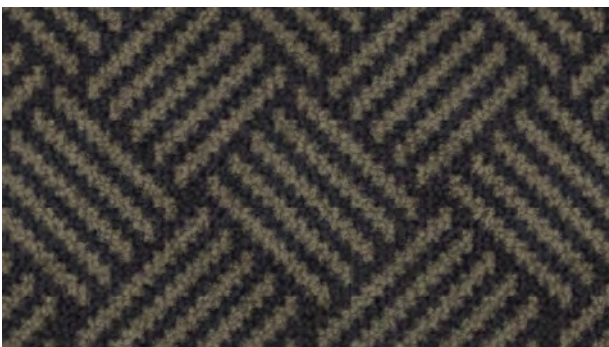
PLATINIUM



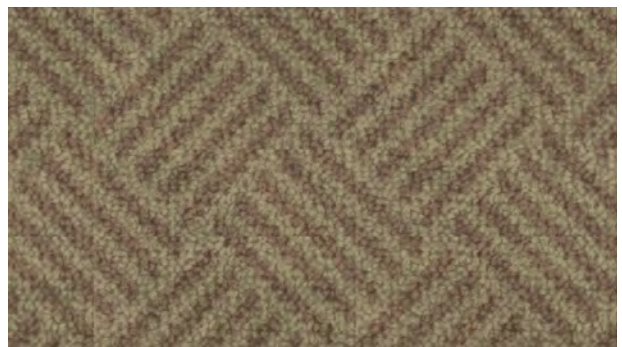
COBALT



STEEL



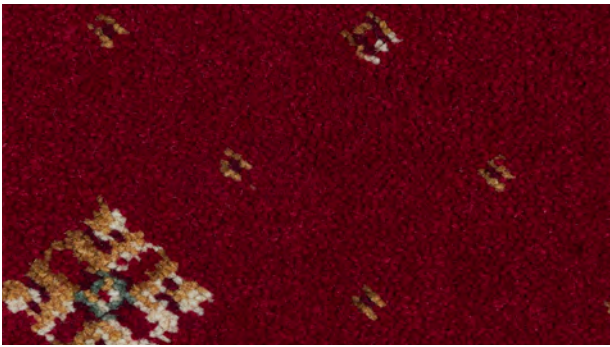
MOONSTONE



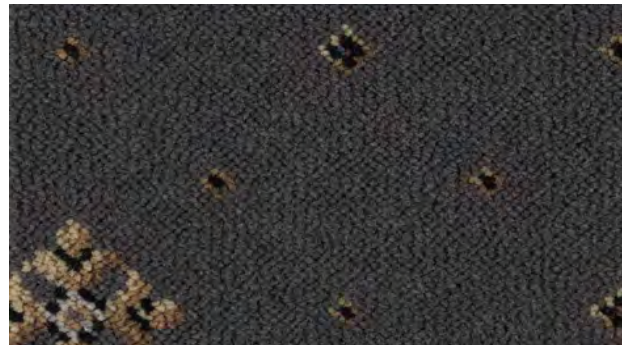
TAUPE

Width / Largeur:	4M00
Quality/Qualité:	80 % Wool/ 20% polyamide, 80% Laine/ 20% Polyamide
Construction / Fabrication:	Tufted / Tufté
Backing / Dossier:	Action
Pile weight /Poid du velour	1200G/M2
Suitanability / Utulisation	Heavy domestic - Stairs, Carpet & Rugs / Passage intensif - Escalier, Moquette et Tapis

BISHOP COLLECTION - IN STOCK



CROWN RED



CROWN CHARCOAL



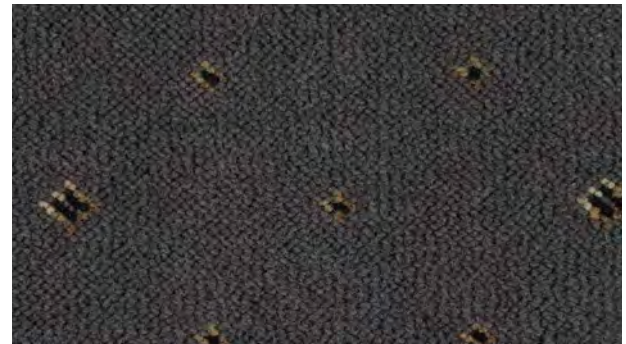
CROWN WILLOW



CROWN NAVY



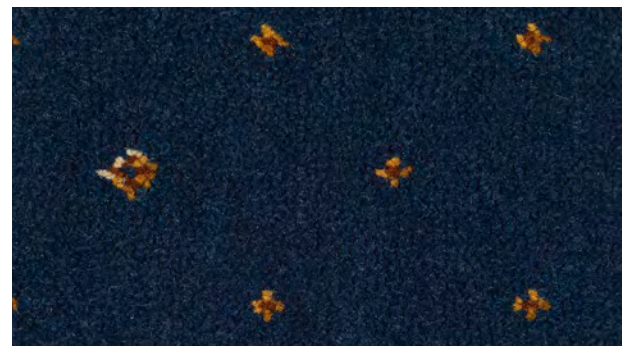
SPECTRE RED



SPECTRE CHARCOAL



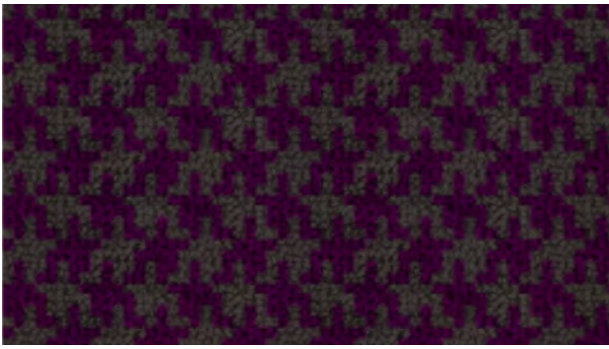
SPECTRE WILLOW



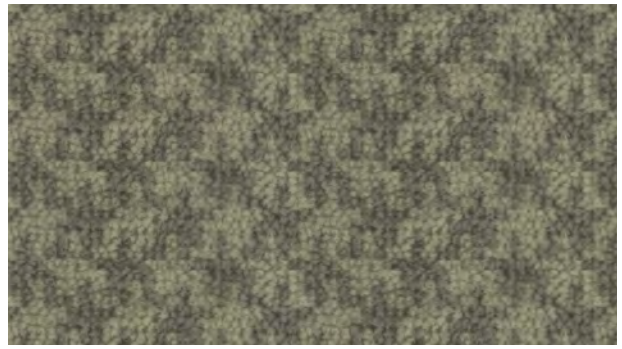
SPECTRE NAVY

Width / Largeur:	4M00
Quality/Qualité:	80 % Wool/ 20% polyamide, 80% Laine/ 20% Polyamide
Construction / Fabrication:	Tufted / Tufté
Backing / Dossier:	Action
Pile weight / Poid du velour	1200G/M2
Suitability / Utilisation	Heavy domestic - Stairs, Carpet & Rugs / Passage intensif - Escalier, Moquette et Tapis

HOUNDSTOOTH COLLECTION - IN STOCK



APHRODITE



NICKEL



CARBON



PLATINIUM



COBALT



STEEL



MOONSTONE



TAUPE

Width / Largeur:	4M00
Quality/Qualité:	80 % Wool/ 20% polyamide, 80% Laine/ 20% Polyamide
Construction / Fabrication:	Tufted / Tufté
Backing / Dossier:	Action
Pile weight /Poid du velour	1200G/M2
Suitanability / Utulisation	Heavy domestic - Stairs, Carpet & Rugs / Passage intensif - Escalier, Moquette et Tapis

WINSTON COLLECTION- BESPOKE ORDER FROM 20M2

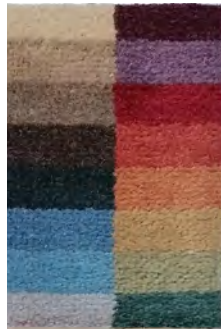
Palette A



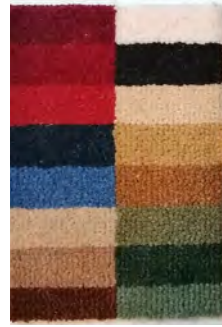
Palette B



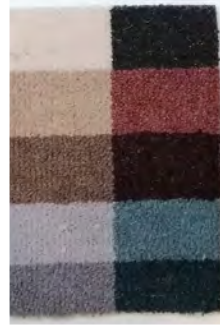
Palette C



Palette D



Palette E

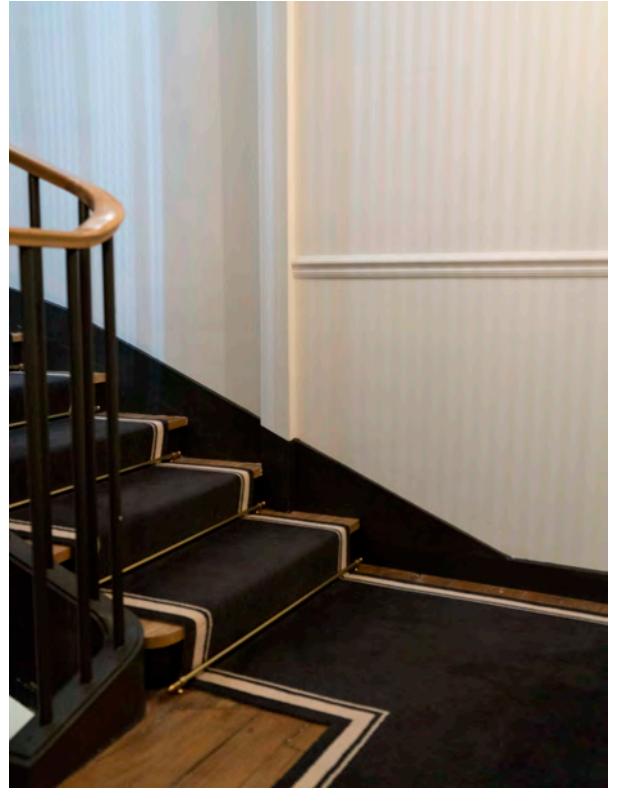


Palette F



Create your personalised carpet, runner, or rug with ease, utilising our colour palettes. The design possibilities are limitless using one of the six colour palettes. Sample made and sent in a week.

Créez facilement votre moquette, passage d'escalier ou votre tapis personnalisé à l'aide de nos palettes de couleurs. Les possibilités de conception sont illimitées en utilisant l'une des six palettes de couleurs. L'échantillon est fabriqué et envoyé en une semaine.



Palette A, Black & White



Palette A. PNT, Autumn Red, Black, Mid-Charcoal & Grey Frost



Palette A. Large Hex, Black & White

Width / Largeur:

Quality/Qualité:

Construction / Fabrication:

Backing / Dossier:

Pile weight /Poid du velour

Suitability / Utilisation

Lead time / Delai de fabri-

Bespoke / Sur - Mesure

80 % Wool/ 20% polyamide, 80% Laine/ 20% Polyamide

Woven Carpet / Moquette tissé

Action

1200G/M2

Heavy domestic - Stairs, Carpet & Rugs / Passage intensif - Escalier, Moquette et Tapis

6 to 8 weeks / 6 à 8 semaines

Winston Collection HARTEY & TISSIER

When we founded **Hartley & Tissier** in 1995, little did we anticipate the success that our fusion of **French design** and traditional **English craftsmanship** would achieve.

Swiftly gaining renown across Europe, our signature lies in the design, production, and installation of flatwoven rugs and durable wool carpets that embody both style and longevity.

Hartley & Tissier proudly presents three distinctive products: **Flatweave carpets, hand-tufted rugs, and bespoke carpets** crafted using the Axminster technique. Our growth has been marked by the continuous expansion of our product range, with the introduction of a multitude of colors and patterns to our extensive stock.



Andrew Hartley
Managing Director

Stephanie Tissier
Design Director



Our exceptional quality and sustained business growth led to the prestigious honor of receiving the *Queen's Award for Enterprise in 2015*.

Queen's Award for enterprise - 2015

The production of our carpets is meticulously carried out in England by skilled craftspeople and technicians. While many of our ranges are crafted using traditional methods and weaving looms, we possess the versatility to seamlessly integrate the latest production technology when the project demands it.

Our commitment to excellence extends to the selection of materials. For instance, our durable flatweave carpets are exclusively crafted from heavyweight woollen yarn spun in Yorkshire



Hartley production facility - UK



CONTACT US |

To learn more about our full creative flooring collection,
or to request a sample please visit our website.

WWW.HARTLEYTISSIER.COM

Hartley & Tissier LTD UK

24 Knightsbridge,
Business Centre Knightsbridge

Cheltenham GL51 9TA
+44 (0) 1242680346
sales@hartleytissier.com

Hartley France

87 Rue de Monceau,
75008 Paris

+33 (0) 1 53 04 06 86
paris@hartleytissier.fr

Hartley Sarl Switzerland

Rue du valentin 34 et demi,
1004 Lausanne

+41 (0) 21 218 09 46
josephine@hartleytissier.com

