



Design: Tamise II |

Designed in France, Made in Great Britain



Winston Collection

Our bespoke woven **Axminster** carpets are available in any design with a large choice of colours. Choose from an extensive palette of colours and entrust our design team with your vision. **Within a week**, our sampling department will deliver design samples, ensuring your ideas come to life seamlessly.

Explore our iconic designs on our color tech platform, allowing you to create personalized colorways for at-home printing. Crafted from an **80% Wool and 20% Nylon** blend, our axminster carpets boast exceptional durability and resistance. Certified as fire-resistant, our high-end quality carpets are ideal for contract use.

Versatility is key, and our carpets are available in multiple widths—**0.69m, 0.91m, 3.66m, and 4.00m**—providing flexibility to complement any surface. Whether you envision wall-to-wall elegance, sophisticated stair runners, or chic rugs, our Axminster Carpets offer diverse finishing options for both runners and rugs.

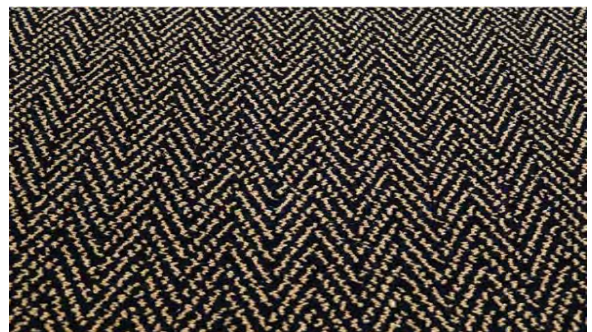
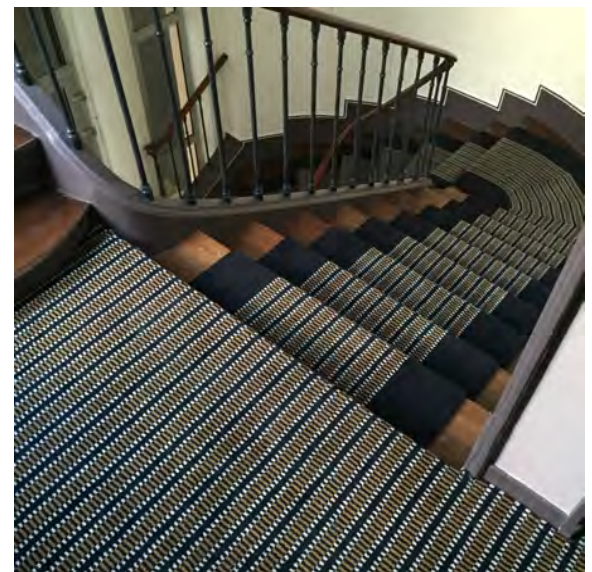
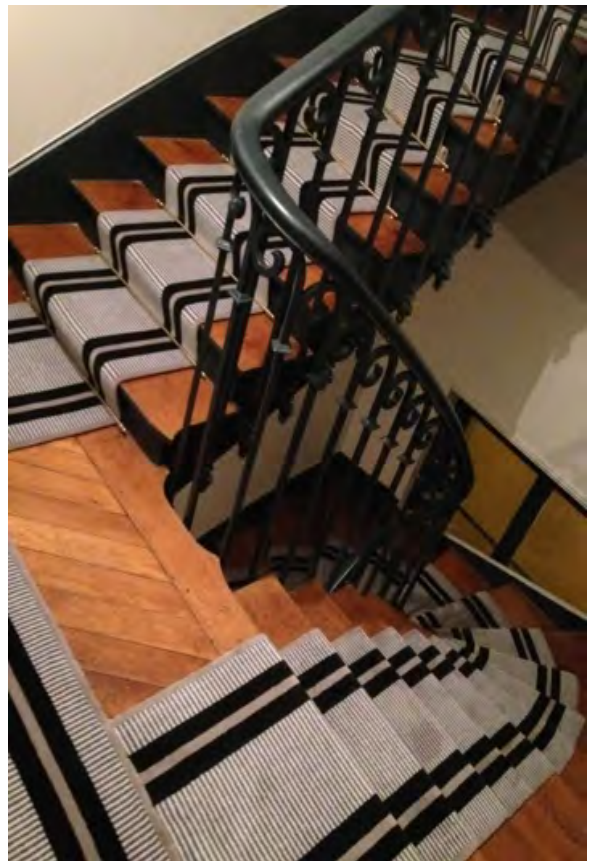
All our products are proudly manufactured in the **U.K.** with a swift turnaround of just **6 weeks with a minimum order of 20M2**. For your convenience, we extend our fitting services to the U.K., France, and Switzerland, and ensure global deliveries.

Immerse yourself in our complete creative flooring collections by visiting our website. To experience the tactile beauty of our carpets firsthand, request a sample today. Redefine your space with the unparalleled craftsmanship of our bespoke Axminster carpets.

Make your own carpet or rug by scanning our QR code:



www.hartleytissier.com
from Switzerland: *www.hartleytissier.ch*



1. Large Herringbone 2. Bespoke PNT 3. Safari design/ Residential 4. PNUK border runner 5. Small Herringbone

REF: Le Saint

Design Size: 26.3in x 26.3in
Metric: 0.69M x 0.69M
Match: Straight
Print Scale: 1:7.00
Repeats: 2 by 2.20





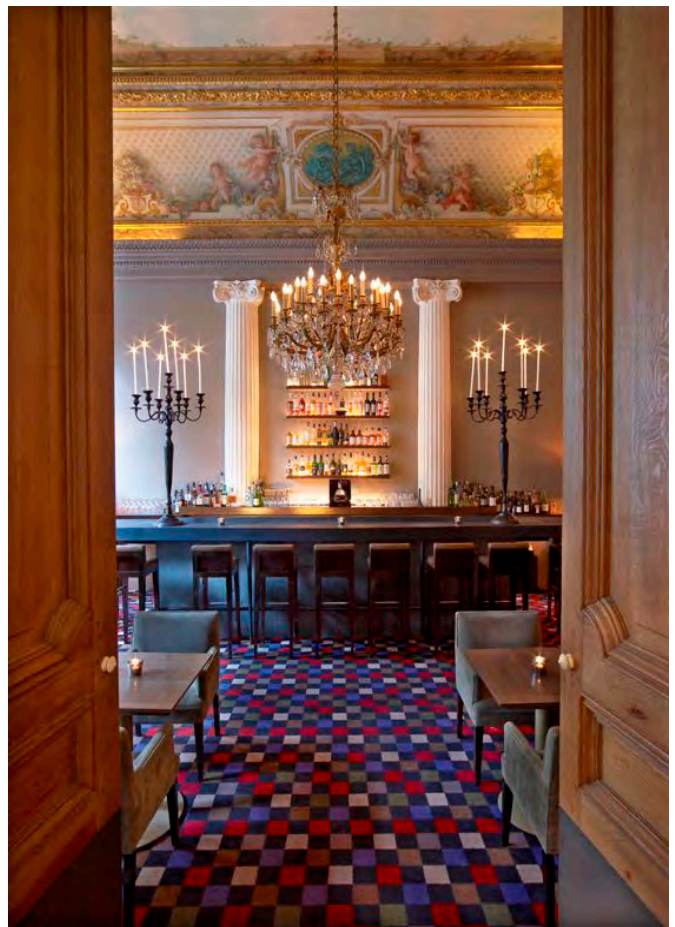
1.Hotel le Narcisse 2. Flower/Hotel Paris 3. Bespoke runner/Pavillon Vandome 4.Bespoke Flower 5. Hex Black & White



Bespoke | *Restaurant Apicius*



1. Round | *Hotel Petit Moulin* 2. Large Escargot | *Hotel d' Aubusson* 3. Bespoke | *Hotel Narcisse Blanc* 4. Pento | *Showroom*



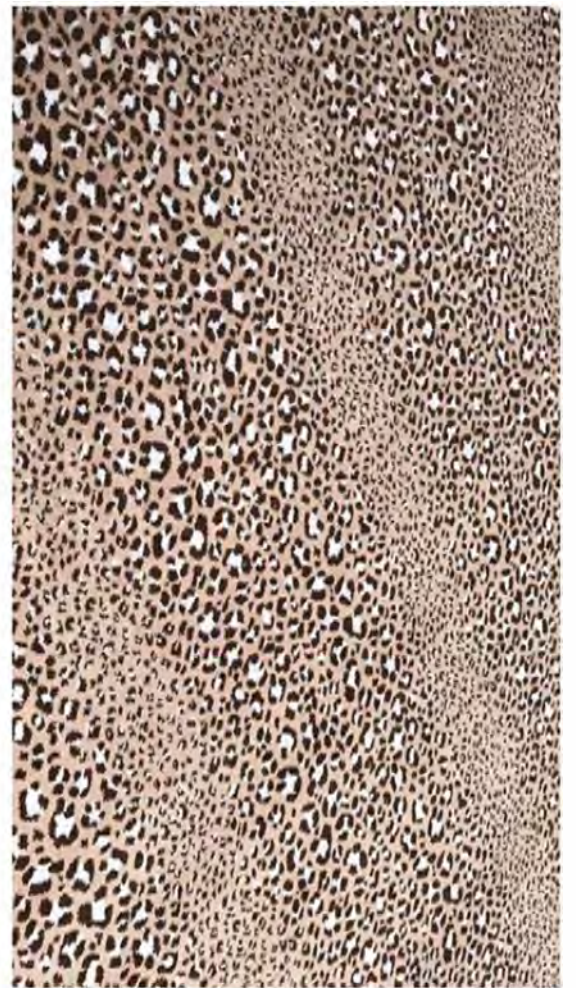
1. PNUK | Residential 2. Houndstooth 3. Zebra Willow 4. Restaurant Apicius



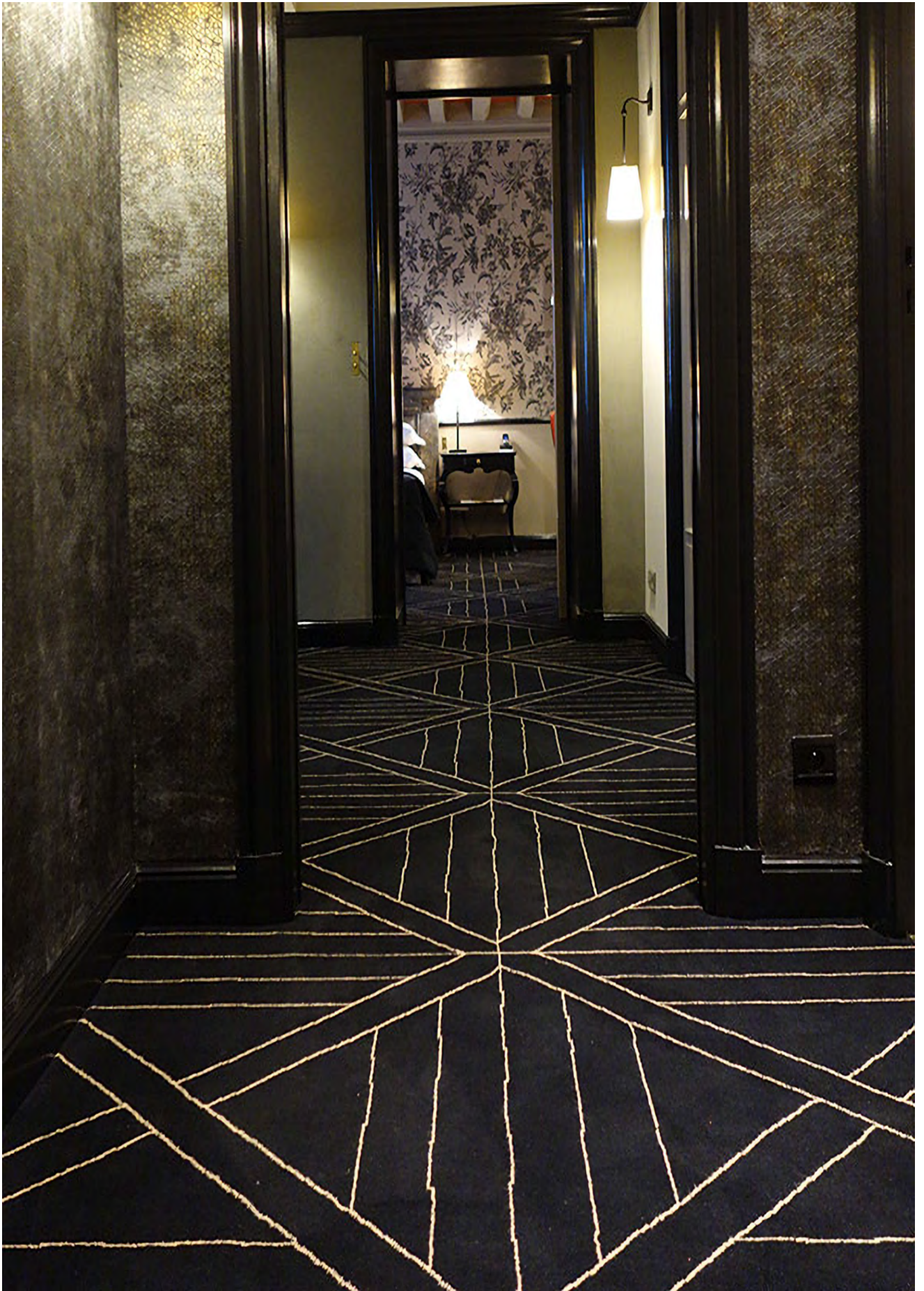
PNT & Diamond Rug/ Hotel Paris



1.Parquet/Pavillon de la reine 2: La tamise 3. Stripes/ 5*Hotel



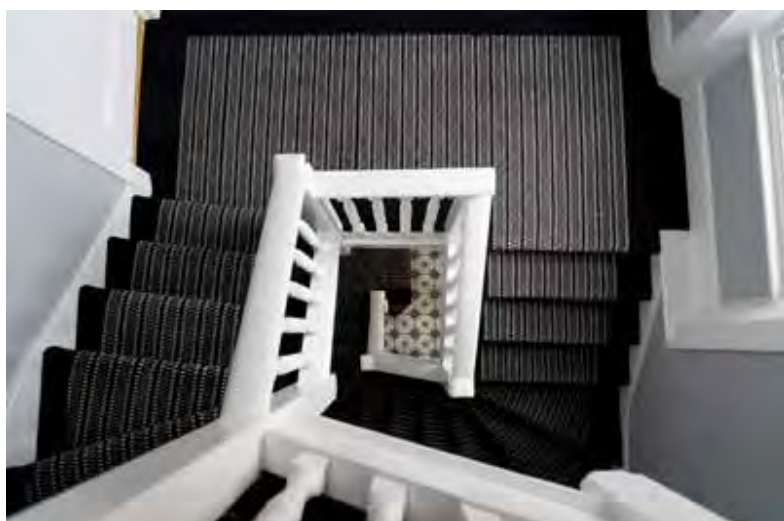
1.Red Leopard print runner/ Residential 2.Leopard print/ showrom 3. Leopard print/ Hotel St Germain



Parquet | *Hotel Pavillon de la Reine*



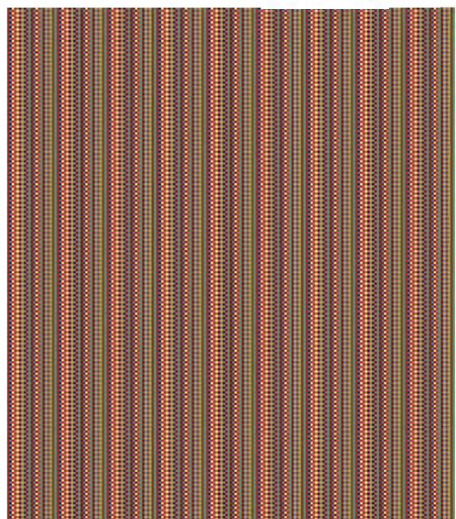
Parquet / Restaurant l'Arc



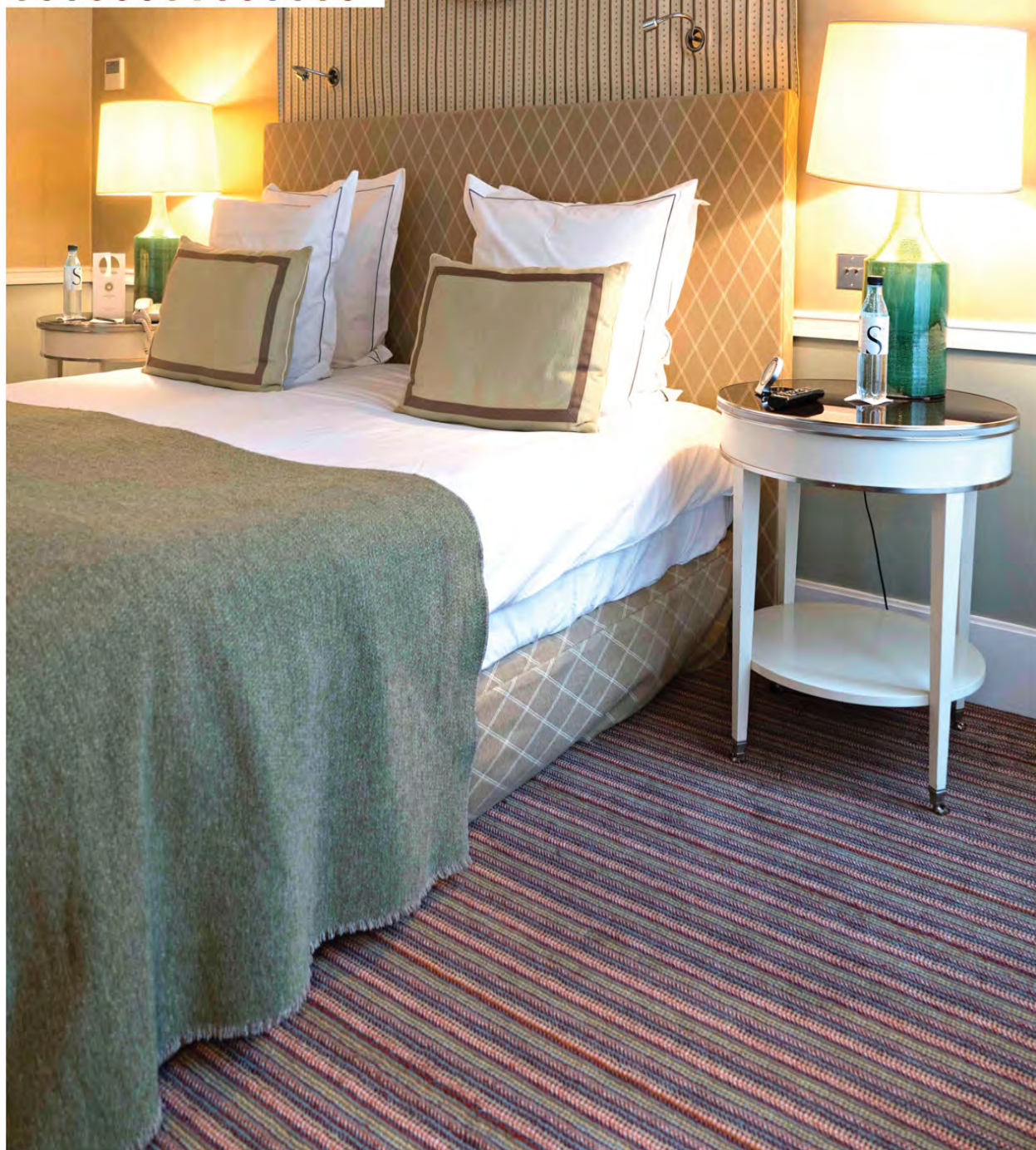
1 . Josephine | *Hotel Recamier* 2 . Tweed | *Hotel d' Aubusson* 3 . Tweed | *Hotel d' Aubusson* 4 . PNT | *Residential* 5 . Jewel | *Showroom* 6 . PNUK | *Residential*



Striped Herringbone/ 5* Hotel



C.491	C.53	C.76	C.830	C.426	C.10	C.360	C.131	C.432	C.243	C.374	C.413	C.149	C.518
1	2	3	4	5	6	7	8	9	10	11	12	13	14



Josephine Green / 5* Hotel

Josephine Collection- 100% wool - In stock



Josephine – Blue



Josephine – Brown



Josephine – Green



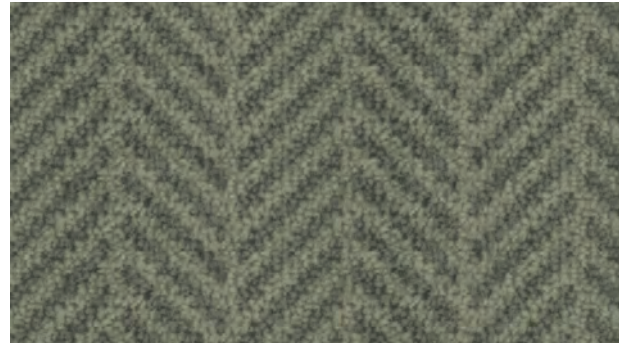
Josephine – Grey

Perfect for wall to wall carpet as well as stair runner. 10 row Axminster, In stock in 69cm

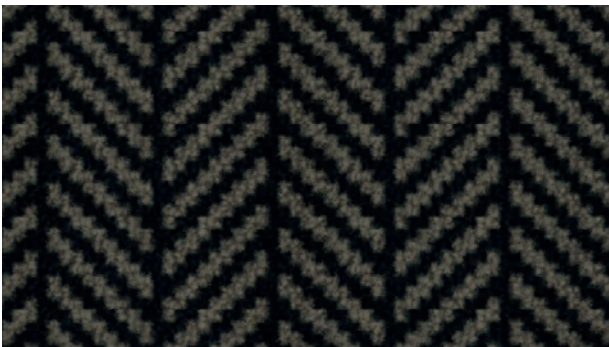
HERRINGBONE COLLECTION - IN STOCK



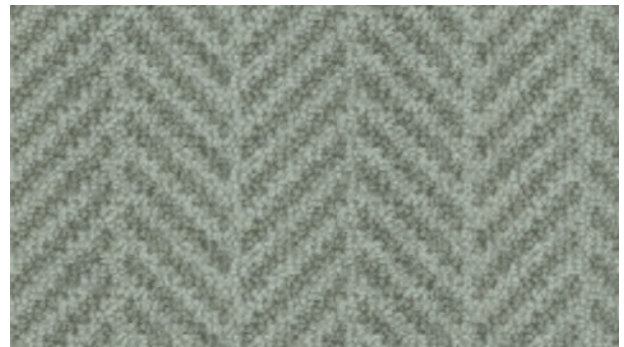
APHRODITE



NICKEL



CARBON



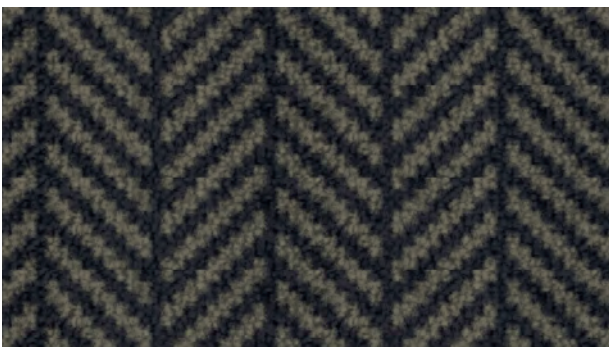
PLATINIUM



COBALT



STEEL



MOONSTONE



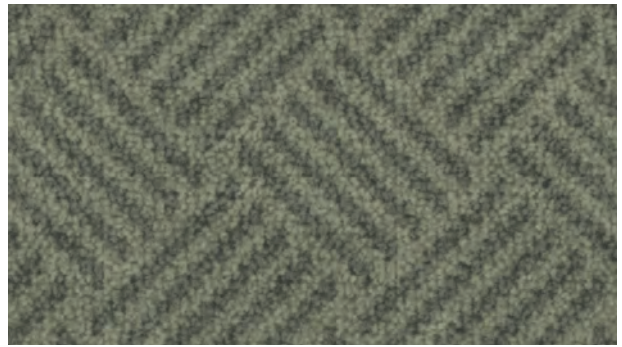
TAUPE

QUALITY: 80% WOOL/ 20% POLYAMIDE
CONSTRUCTION: TUFTED
BACKING: ACTION
PILE WEIGHT: 1200G/M2
SUITABILITY: HEAVY DOMESTIC - STAIRS, CARPET & RUGS

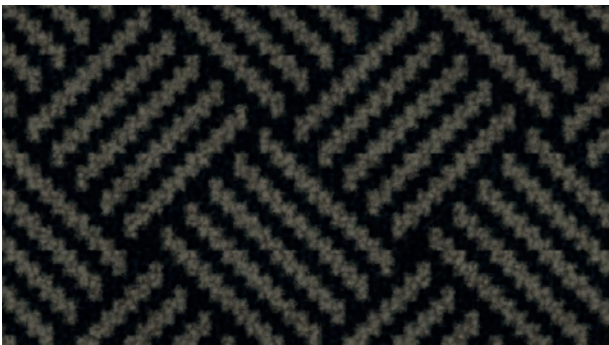
PANIER COLLECTION - IN STOCK



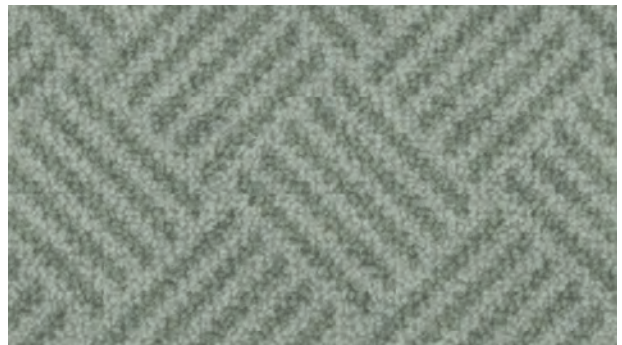
APHRODITE



NICKEL



CARBON



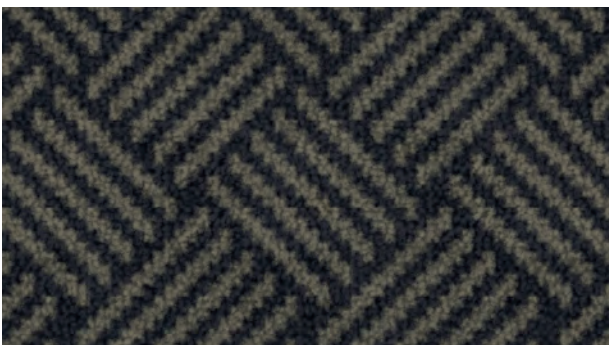
PLATINIUM



COBALT



STEEL



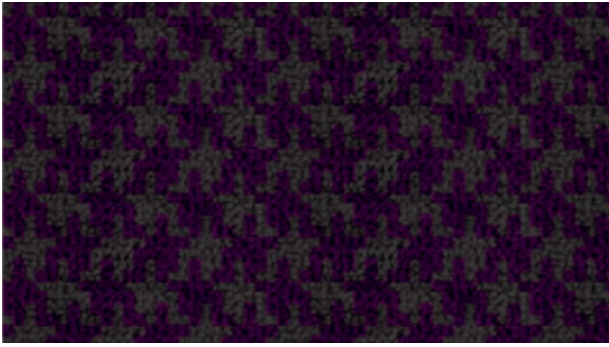
MOONSTONE



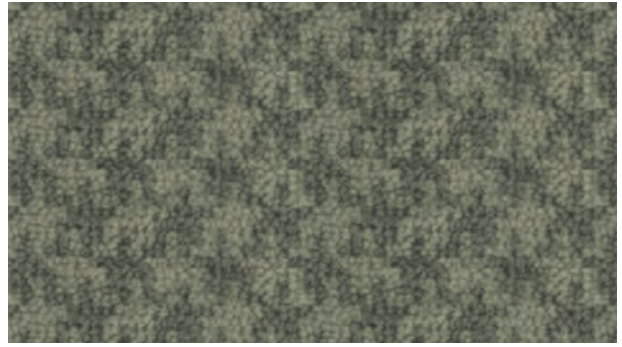
TAUPE

QUALITY: 80% WOOL/ 20% POLYAMIDE
CONSTRUCTION: TUFTED
BACKING: ACTION
PILE WEIGHT: 1200G/M2
SUITABILITY: HEAVY DOMESTIC - STAIRS, CARPET & RUGS

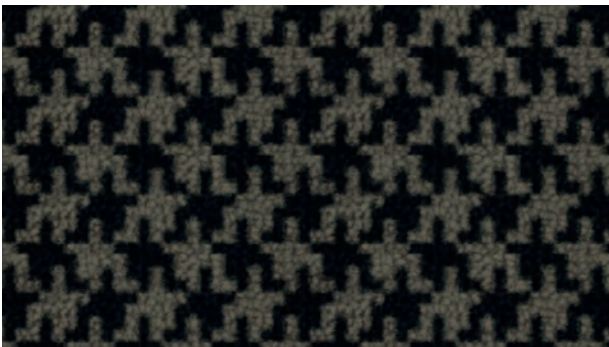
HOUNDSTOOTH COLLECTION - IN STOCK



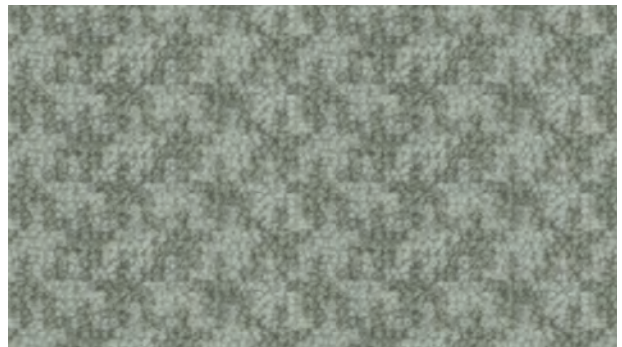
APHRODITE



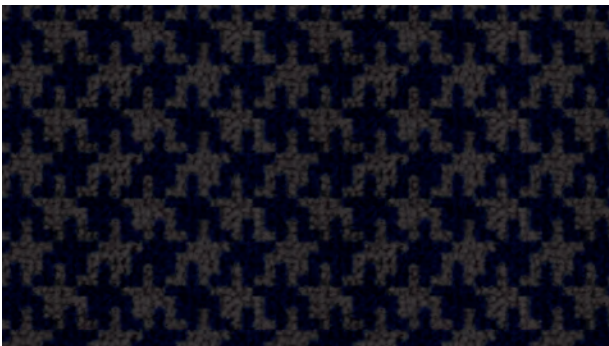
NICKEL



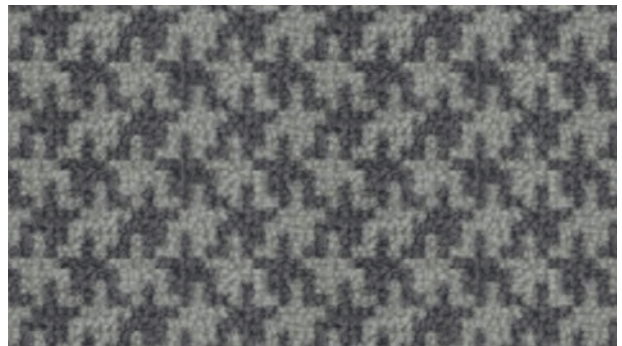
CARBON



PLATINIUM



COBALT



STEEL



MOONSTONE



TAUPE

QUALITY: 80% WOOL/ 20% POLYAMIDE
CONSTRUCTION: TUFTED
BACKING: ACTION
PILE WEIGHT: 1200G/M2
SUITABILITY: HEAVY DOMESTIC - STAIRS, CARPET & RUGS

Winston Collection HARTEY & TISSIER

When we founded **Hartley & Tissier** in 1995, little did we anticipate the success that our fusion of **French design** and traditional **English craftsmanship** would achieve.

Swiftly gaining renown across Europe, our signature lies in the design, production, and installation of flatwoven rugs and durable wool carpets that embody both style and longevity.

Hartley & Tissier proudly presents three distinctive products: **Flatweave carpets, hand-tufted rugs, and bespoke carpets** crafted using the Axminster technique. Our growth has been marked by the continuous expansion of our product range, with the introduction of a multitude of colors and patterns to our extensive stock.



Andrew Hartley
Managing Director

Stephanie Tissier
Design Director



Our exceptional quality and sustained business growth led to the prestigious honor of receiving the *Queen's Award for Enterprise in 2015*.

Queen's Award for enterprise - 2015

The production of our carpets is meticulously carried out in England by skilled craftspeople and technicians. While many of our ranges are crafted using traditional methods and weaving looms, we possess the versatility to seamlessly integrate the latest production technology when the project demands it.

Our commitment to excellence extends to the selection of materials. For instance, our durable flatweave carpets are exclusively crafted from heavyweight woollen yarn spun in Yorkshire



Hartley production facility - UK



CONTACT US |

To learn more about our full creative flooring collection,
or to request a sample please visit our website.

WWW.HARTLEYTISSIER.COM

Hartley & Tissier LTD UK

24 Knightsbridge,
Business Centre Knightsbridge

Cheltenham GL51 9TA
+44 (0) 1242680346
sales@hartleytissier.com

Hartley France

87 Rue de Monceau,
75008 Paris

+33 (0) 1 53 04 06 86
paris@hartleytissier.fr

Hartley Sarl Switzerland

Rue du valentin 34 et demi,
1004 Lausanne

+41 (0) 21 218 09 46
josephine@hartleytissier.com

