



HARTLEY
&TISSIER

HARTLEY & TISSIER

FLATWEAVE COLLECTION CATALOGUE



PNT16 - Black : Residential stair runner, Cheltenham

Flatweave Collection

Our Flatweave runners are the perfect combination of luxury, style, and durability. They are ideal for stairways and hallways and can be seamed together (invisible joints) to form rugs or used for wall-to-wall carpeting.

Product summary:

Stripes: Stocked in 70cm

Finley: Stocked in 62cm & 72cm

Tendance IV & Tendance V: Stocked in 4m

Jacquard: 70cm & 90cm. Minimum order: 20 linear meters

Bespoke orders: from 20 linear meters.

Composition: 100% Pure Wool.

Collection Tissé plat

Notre collection de tissé plat est la combinaison parfaite entre le luxe, style et durabilité.

Nos Tissé plat sont idéals pour les passages d'escaliers et couloirs. Peuvent être assemblé, cousus, joints invisibles, pour faire des tapis à vos dimensions ou en moquette.

Résumé des produits:

Stripes: Stocké en 70cm

Finley: Stocké en 62cm et 72cm

Tendance IV & Tendance V: Stocké en 4m

Jacquard: Stocké en 70cm et 90cm. Commande minimum: 20 mètres linéaires.

Fabrication sur mesure: à partir de 20 mlin.

Composition: 100% Pure Laine.

Flachgewebte-Kollektion

Unsere Flachgewebe-Läufer sind die perfekte Kombination aus Luxus, Stil und Langlebigkeit. Sie sind hervorragend für Treppen und Flure geeignet und können zudem zusammengenäht werden (unsichtbare Naht), um lose Teppiche oder raumfüllende Bodenbeläge zu kreieren.

Produktübersicht:

Stripes: 70cm.

Finley: In einer Breite von 62cm und 72cm vorrätig.

Tendance IV & Tendance V: 4.00m breit.

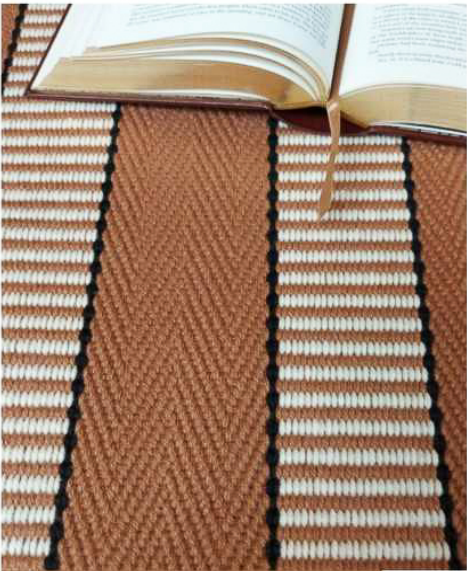
Jacquard-Kollektion: 70cm und 90cm. Mindestbestellmenge von 20 Laufmetern;

Sonderanfertigungen: Mindestbestellmenge von 20 Laufmetern.

Zusammensetzung: 100% reine Wolle.



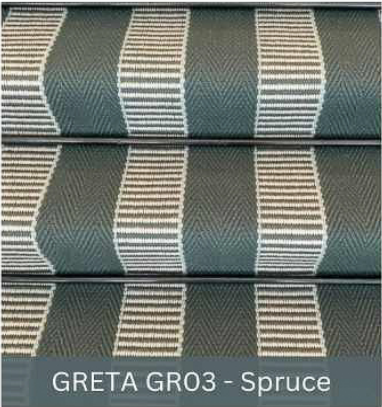
NEW COLLECTION | Greta & Capri



GRETA GR01 - Cinnamon



GRETA GR02 - Black



GRETA GR03 - Spruce



Greta & Capri - In stock in 70cm



Ref: Greta 01 - Cinnamon



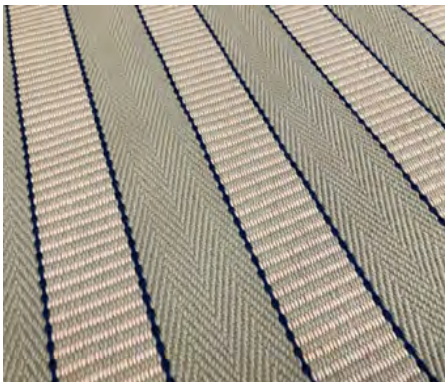
Ref: Greta 02 - Black



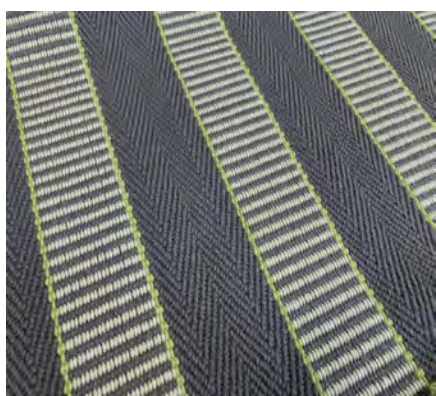
Ref: Greta 03 - Spruce



Ref: Greta 04 - Sisal



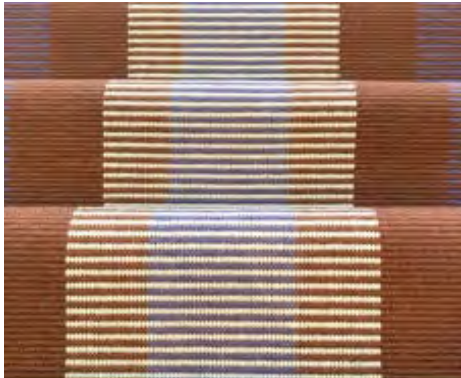
Ref: Greta 05 - Willow



Ref: Greta 06 - Lead



Ref: Capri 01 - Atlantic Blue



Ref: Capri 02 - Terra

FLATWEAVE COLLECTION |

Finley, Tendance IV & Tendance V



Ref: FG05 Putty/Spruce



Ref: FG01 Black/Ivory



Ref: FG03 Gunmetal/Rust

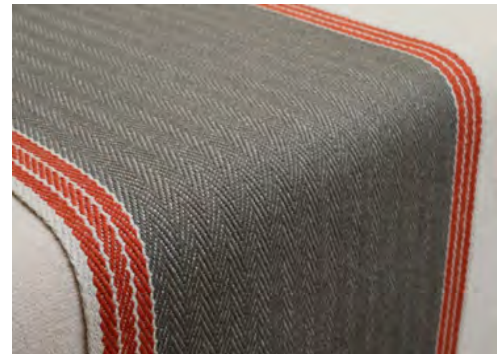
Finley - In stock in 61cm & 72cm



Ref: FG01 - Black/Ivory



Ref: FG02 - Taupe/Masala



Ref: FG03 - Gunmetal/Rust



Ref: FG04 - Linen/White



Ref: FG05 - Putty/Spruce



Ref: FG06 - Lt. Grey/Denim

Tendance IV - 4m (matching colours to Finley)



Ref. .01 Black, Taupe

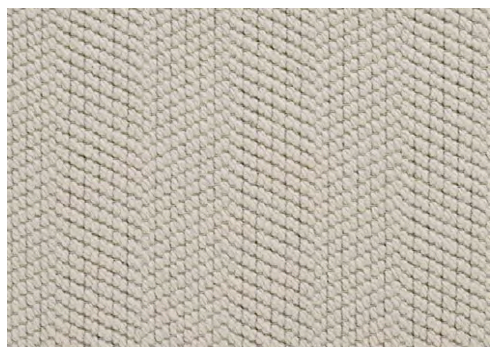


Ref. .04 Linen, Nickel



Ref. .05 Spruce, Taupe

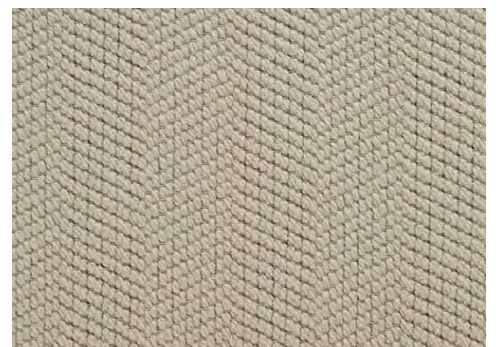
Tendance V - 4m



Ref: Herringbone - Hare



Ref: Herringbone - Fallow



Ref: Herringbone - Marmot



Ref: Boucle - Hare



Ref: Boucle - Fallow



Ref: Boucle - Marmot

FLATWEAVE | Stripes Collection



Ref: PNT28, Peacock

Transat PNT & PNUK- In stock in 70cm



Ref: PNT 16 - Black - Available in 60cm



Ref: PNT 21 - Grey



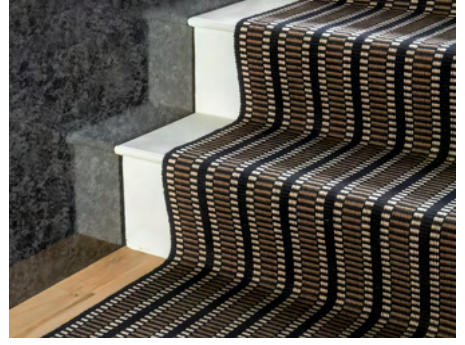
Ref: PNT 23 - Graphite



Ref: PNT 25 - Almond - from 20m



Ref: PNT 26 - Cherry - from 20m



Ref: PNUK - Black



Ref: PNT 27 - French Blue

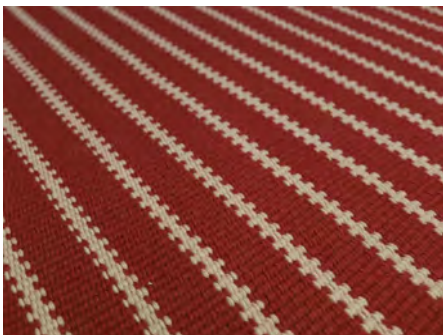


Ref: PNT 28 Peacock



Ref: PNT 29 - Tangerine

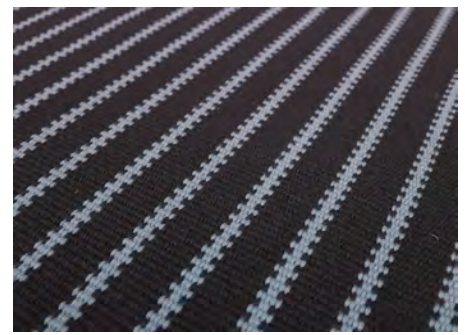
ZIP- In stock in 70cm



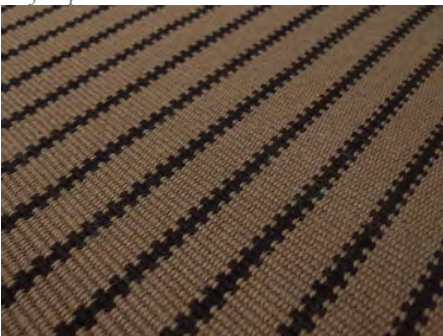
Ref: Zip 05 - Red



Ref: Zip 06 - Beige



Ref: Zip 07 - Dark Blue



Ref: Zip 11 - Charcoal



Ref: Zip 14 - Nickel



Ref: Zip 15 - Thyme

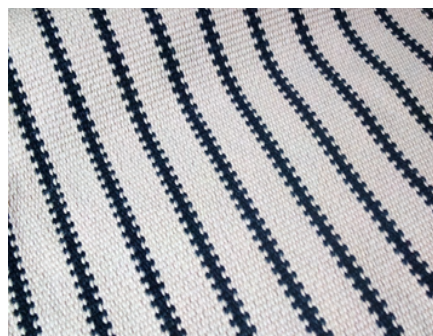
FLATWEAVE | Stripes Collection



Ref: ZIP 16 - Indigo

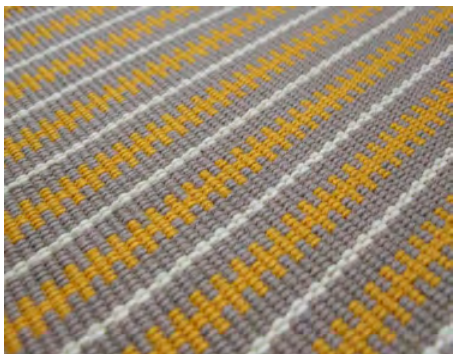


Ref: ZIP 19- Black

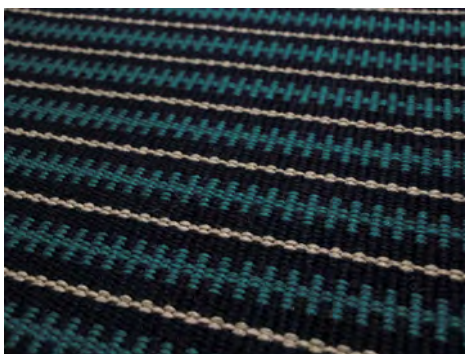


Ref: ZIP 18 - Miel

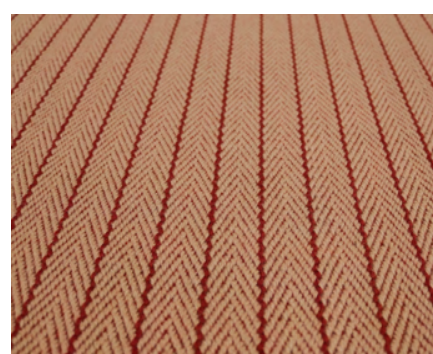
Frances FT & Claire CF & Kelly JD - In stock in 70cm



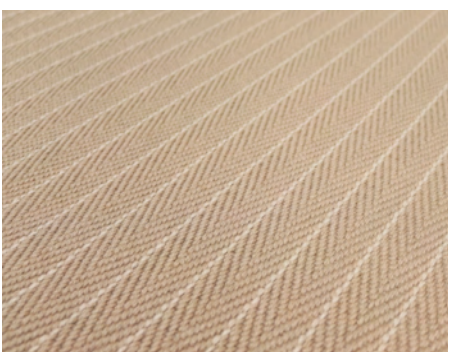
Ref: FT 01 - Marigold. From 20mlin



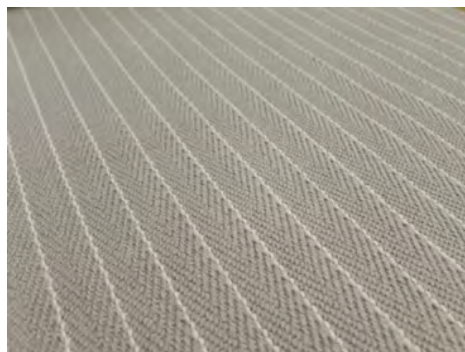
Ref: FT 02 - Teal. From 20mlin



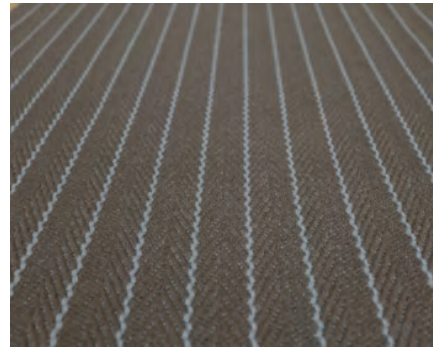
Ref: CF 03 - Rust



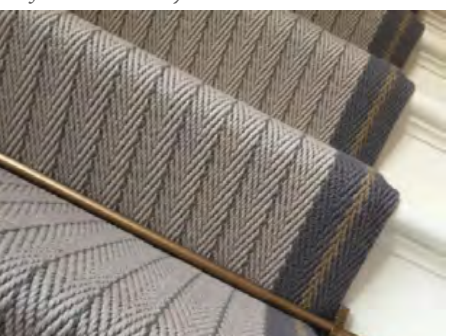
Ref: CF05 - Putty



Ref: CF 06 - Pebble



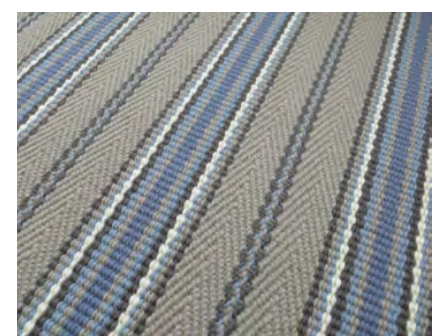
Ref: CF 07 - Gunmetal



Ref: CFB Lt.Grey, Graphite, Mushroom



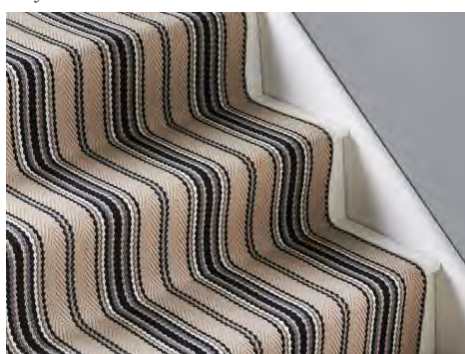
Ref: JD 02 - Red



Ref: JD 03 - Blue



Ref: JD 04 - Celadon



Ref: JD 05 - Linen



Ref: JD 06 - Black

Multi - Order from 20 lin.m



Ref: Multi - Green. From 20 lin.m



Ref: Multi - Grey. From 20 lin.m

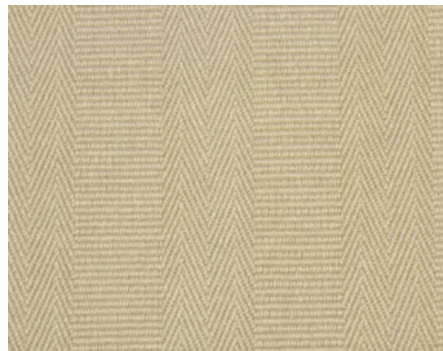


Ref: Multi - Red. Fom 20 lin.m

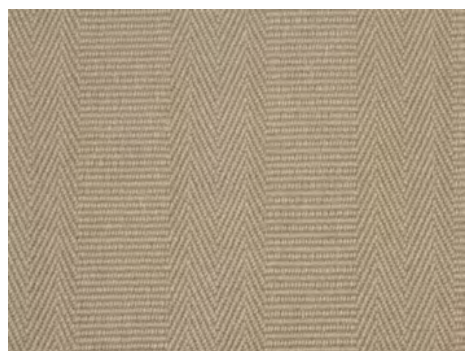


Ref: Multi - Aqua. From 20 lin.m

Kelly Solid KS - In stock in 70cm



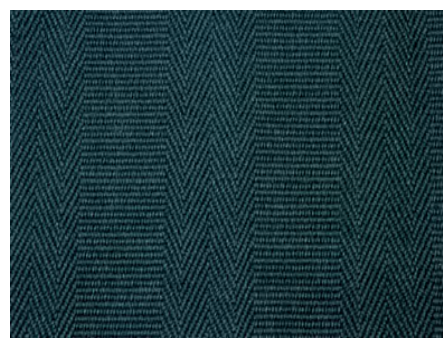
Ref: KS 01 - Ivory



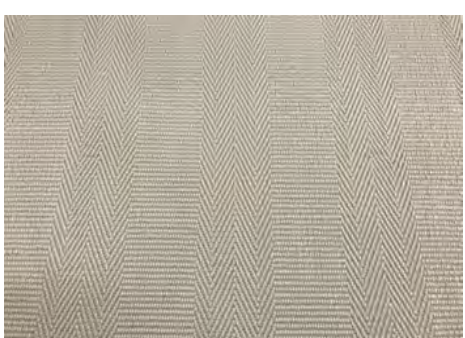
Ref: KS 02 - Pebble



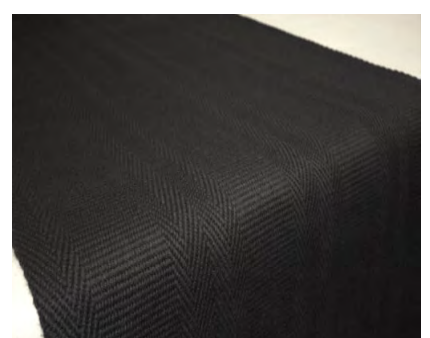
Ref: KS 03 - Nickel. From 20mlin



Ref: KS 05 - Peacock



Ref: KS 06 - Linen



Ref: KS 07 - Black



Diamond - In stock in 70cm



Ref: Diamond - Aqua



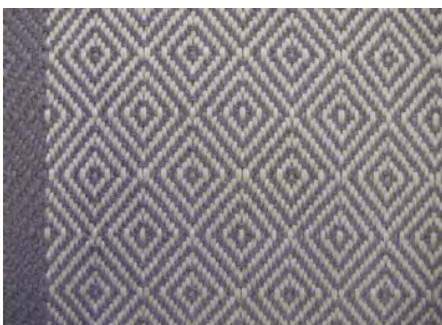
Ref: Diamond - Black



Ref: Diamond Black & White



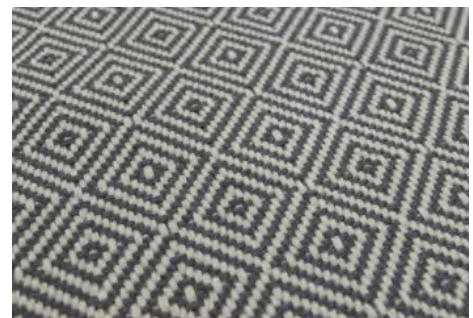
Ref: Diamond - Blue



Ref: Diamond Border- Graphite



Ref: Diamond - Ivory



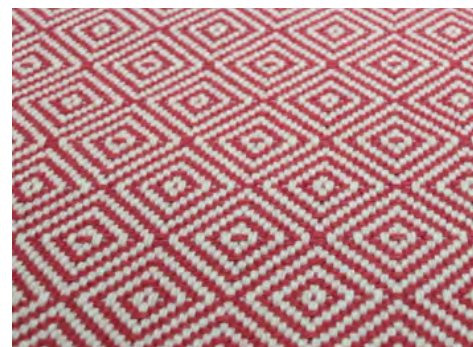
Ref: Diamond - Nickel



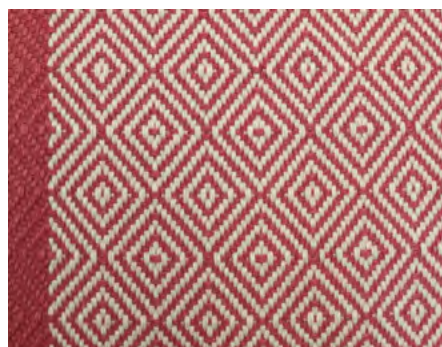
Ref: Diamond Border- Nickel



Ref: Diamond - Pebble



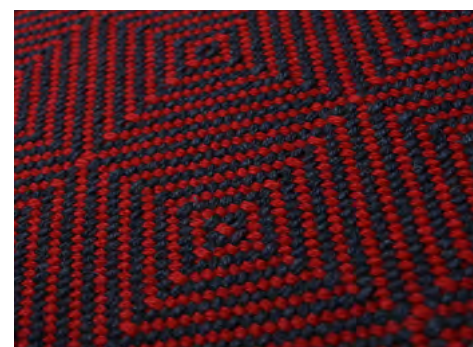
Ref: Diamond Rouge



Ref: Diamond Border - Rouge



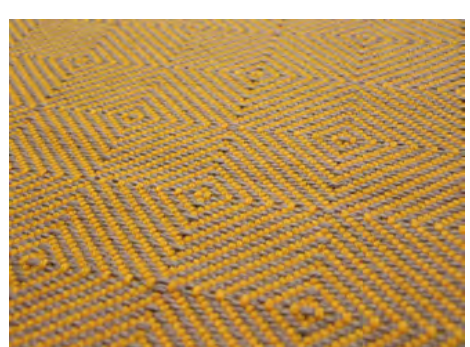
Ref: Diamond - Stone



Ref: Large Diamond - Flame Red



Ref: Large Diamond - Fuchsia



Ref: Large Diamond - Marigold

FLATWEAVE | *Herringbone & Houndstooth Collection*



Ref: Herringbone - Ivory/Black

Herringbone - In stock in 70cm



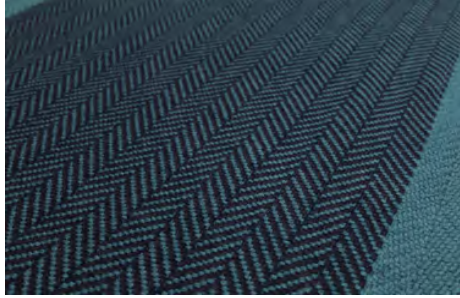
Ref: : H/bone Border Burnt Sienna/Putty



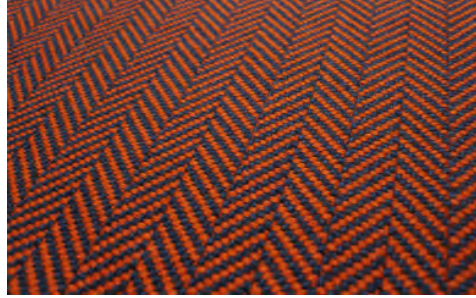
Ref: H/bone Border Ivory/Black



Ref: H/bone Border Nickel/Lt. Grey



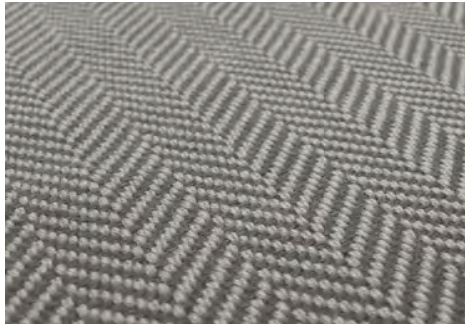
Ref: H/bone Border- Petrol/Ink



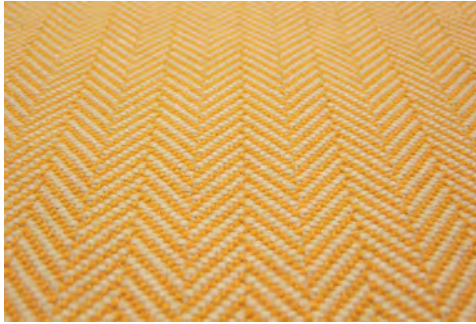
Ref: Herringbone - Bright Orange



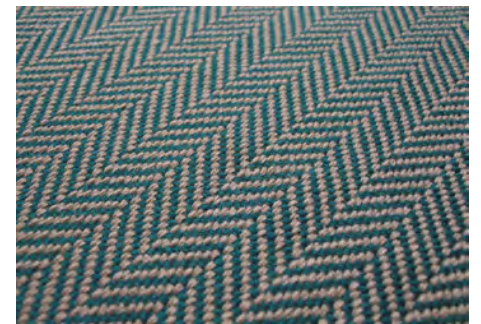
Ref: Herringbone - Ivory/Black



Ref: Herringbone - LT. Grey



Ref: Herringbone - Marigold



Ref: Herringbone - Teal



Ref: Houndstooth - Black, from 20 lin.m



Ref: Houndstooth - Nickel, from 20 lin.m

FLATEWEAVE / *Jacquard Collection*





Ref: Hex - Anthracite/Rouge



Ref: Hex - Black/White



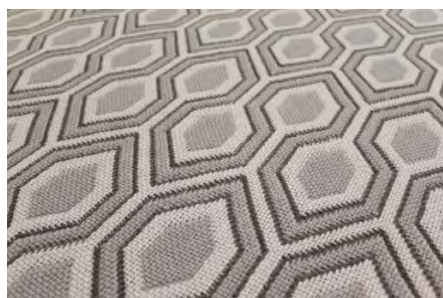
Ref: Hex - Bran/Anthracite



Ref: Hex - Denim/Dark Blue



Ref: Hex - Dove/Slate



Ref: Hex - Pebble



Ref: Kent - Anthracite/Rouge



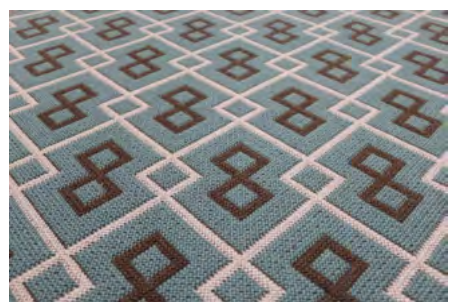
Ref: Kent - Black/White



Ref: Kent - Bran/Anthracite



Ref: Kent - Denim/Dark Blue



Ref: Kent - Dove/Slate



Ref: Trafal - Anthracite/ Rouge



Ref: Trafal - Pearl/Anthracite



Ref: Trafal - Black/White



Ref: Trafal - Bran/Anthracite

Minimum order of 20 lin.m apart from Hex - Black & White

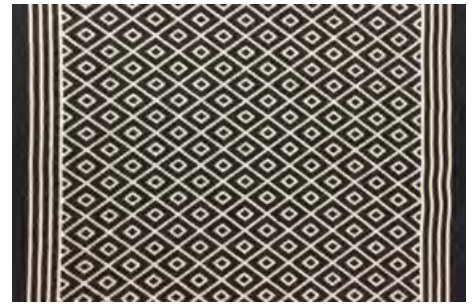
FLA TWEAVE | Jacquard Collection - Minimum order of 20 lin.m



Ref: Trafal - Denim/DK Blue



Ref: Trafal - Dove/Slate



Ref: Tellis Border



Ref: Escargot - Black



Ref: Escargot - Pebble



Ref: Escargot - Red



Ref: Labyrinth - Black



Ref: Labyrinth - Pebble



Ref: Labyrinth - Red

Accessories | Stair rods/ barres d'escalier/ Treppenstangen



Ref: Windsor - Black



Ref: Windsor - Antique brass



Ref: Windsor - Brass



Ref: Windsor - Satin brass



Ref: Windsor - Chrome



Ref: Windsor - Satin nickel



Ref: Windsor - Pewter



Ref: Royale- Black



Ref: Royale - Antique Brass



Ref: Royale - Brass



Ref: Royal - Satin brass



Ref: Royale - Chrome



Ref: Royale - Satin Nickel



Ref: Royale - Pewter



Ref: Tudor- Black



Ref: Tudor- Antique Brass



Ref: Tudor - Brass



Ref: Tudor - Satin Brass



Ref: Tudor - Chrome



Ref: Tudor- Satin Nickel



Ref: Tudor- Pewter

Tailored Flatweave/Tissé plat sur mesure/ Sonderanfertigungen



Our flatweave runners can easily be customised with the option to produce them at different widths (**between 60cm and 140cm**), using either stock or bespoke colours. The minimum order quantity for bespoke productions is **20 linear metres**.



Nos tissés plats peuvent facilement être personnalisés, avec la possibilité de les fabriquer en différentes largeurs (**entre 60 cm et 140 cm**), en utilisant des couleurs standard ou sur mesure. La quantité minimale de commande pour les productions sur mesure est de **20 mètres linéaires**.



Unsere Flachgewebe-Läufer sind einfach individualisierbar. Sie können in einer Breite von 60cm bis 140cm in Standard- oder in Sonderfarben hergestellt werden. Die Mindestbestellmenge für Sonderanfertigungen beträgt **20 Laufmeter**.



Ref: Bespoke JD

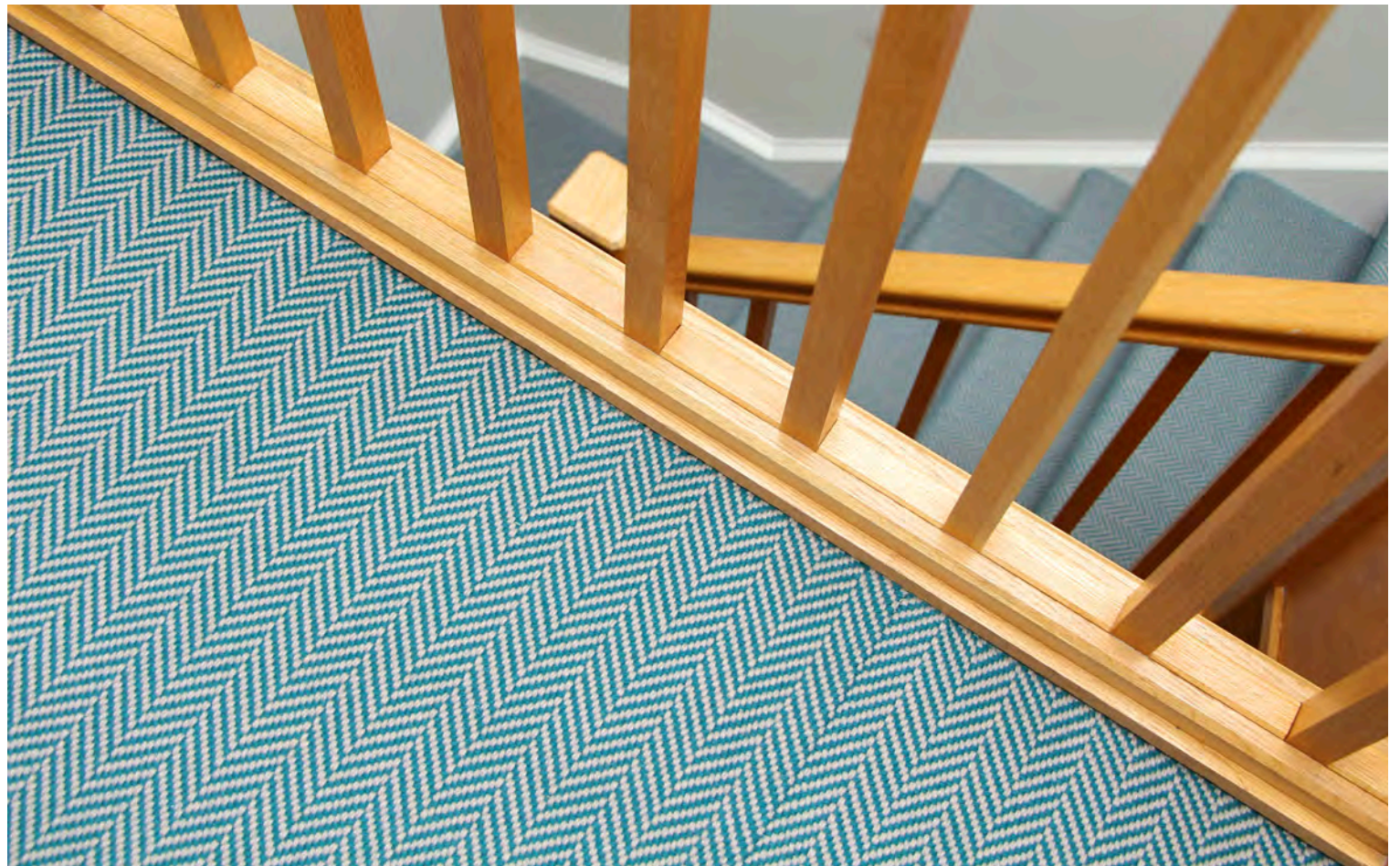
FLATWEAVE / Gallery



Ref: Herringbone Marigold with linen tape border



Ref: Bespoke PNT 16 - Black, 1m00 wide, Geneva



Ref: Herringbone -Teal, Fitted wall to wall



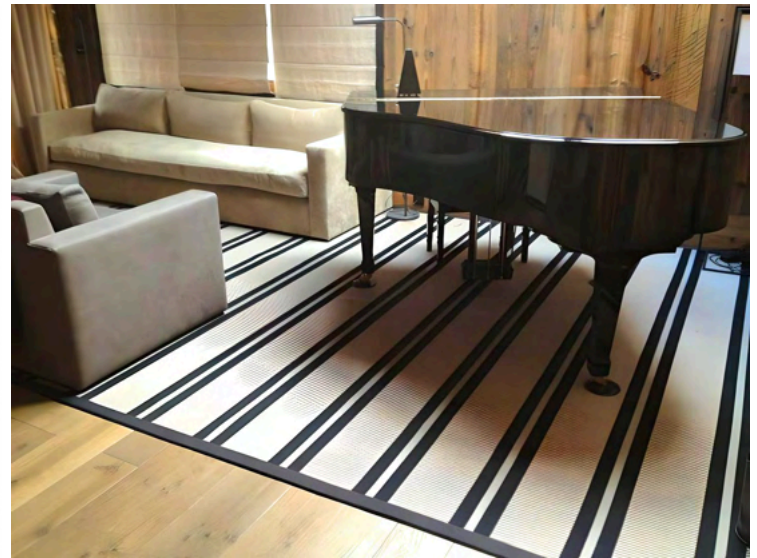
Ref: PNT 29 - Tangerine. Fitted by Roode Loper, Netherlands



Ref: Greta 01 - Cinnamon



Ref: JD 04 - Celadon



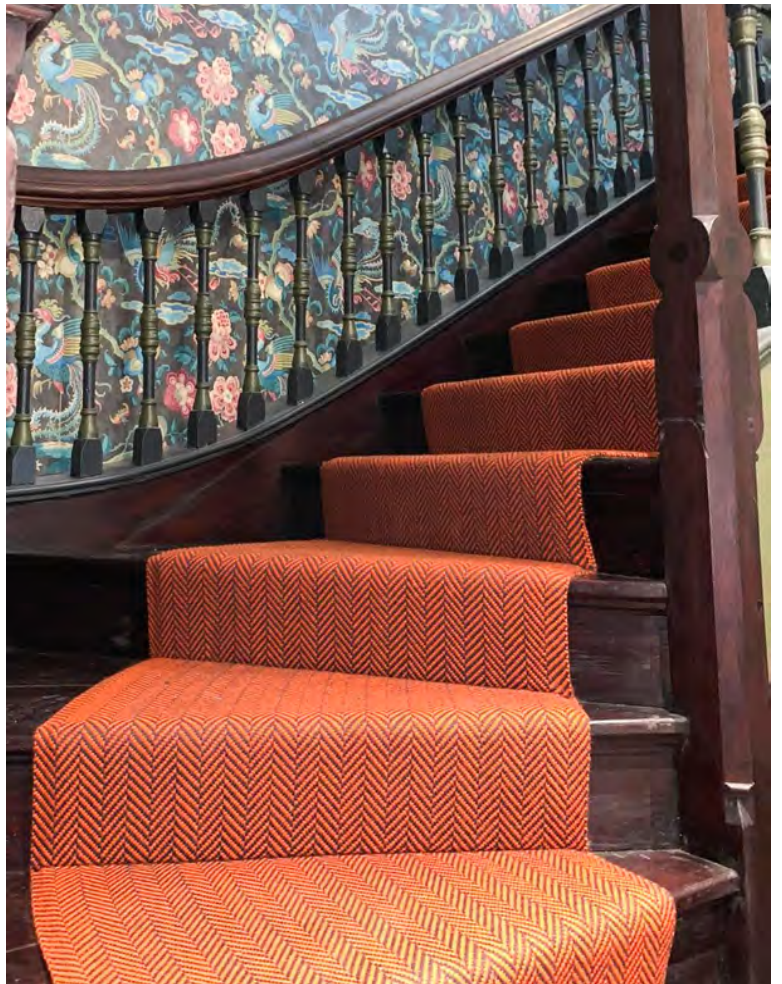
Ref: PNT 16 - Seamed into a rug with Black linen tape, Zermatt



Ref: Houndstooth - Black & White



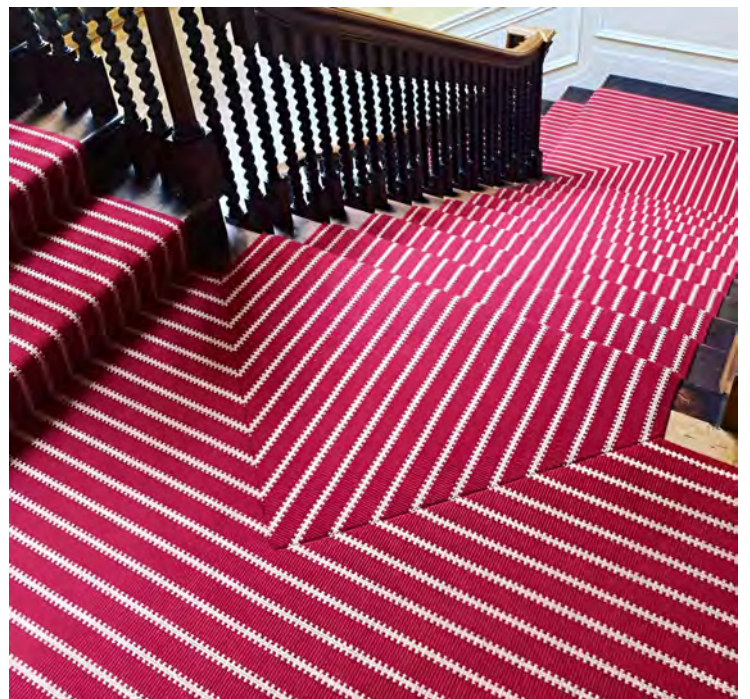
Ref: Finley 04 - Linen & White



Ref: Herringbone- Bright Orange

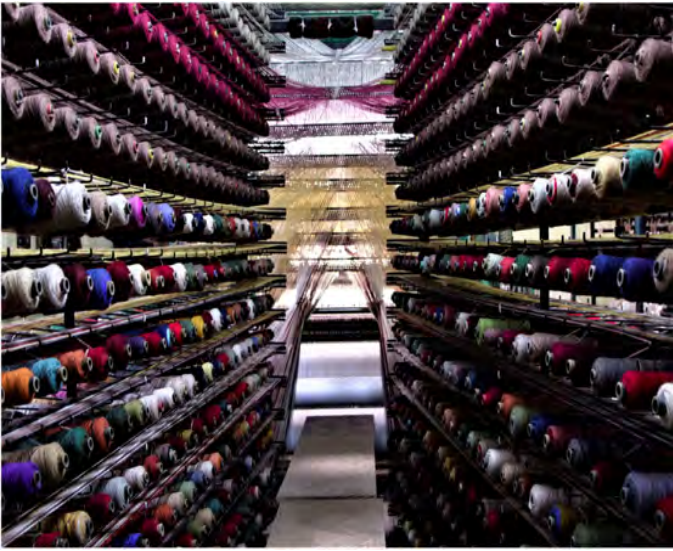


Ref:PNT 27- French Blue



Ref:Zip 05 - Red, fitted by Ben Champness, UK

ABOUT/ *Hartley & Tissier*



Hartley & Tissier Factory, Yorkshire, England



Andrew Hartley, Managing Director - Stephanie Tissier, Design Director



Seaming at our warehouse, Cheltenham

French design flair combined with traditional English craftsmanship

At Hartley & Tissier we love working with natural materials, which is why all our flatweave runners are made from 100% wool. Designed in France and made in the UK, our visually striking and durable runners are popular throughout Europe and beyond. This has led to us winning the 'Queen's Award for Enterprise' in the category 'International Trade' in 2015. Whether you wish to explore our extensive stock range or discuss bespoke carpet options – we look forward to hearing from you.

Conception française combiné à un savoir-faire anglais traditionnel

Chez Hartley & Tissier, nous aimons travailler avec des matériaux naturels, c'est pourquoi tous nos tapis de sol à tissage plat sont fabriqués en 100% laine. Conçus en France et fabriqués au Royaume-Uni, nos chemins de table durables et visuellement remarquables sont populaires dans toute l'Europe et au-delà. Cela nous a permis de remporter le "Queen's Award for Enterprise" dans la catégorie "Commerce international" en 2015. Que vous souhaitiez explorer notre vaste gamme de produits en stock ou discuter d'options de tapis sur mesure, nous sommes impatients d'avoir de vos nouvelles.

Französisches Design kombiniert mit traditioneller englischer Handwerkskunst

Wir bei Hartley & Tissier lieben es, mit natürlichen Materialien zu arbeiten, weshalb all unsere Flachgewebe-Läufer aus 100% Wolle bestehen. Unsere markanten und langlebigen Teppiche werden in Frankreich gestaltet und in England hergestellt. Sie sind in Europa und darüber hinaus beliebt, weswegen wir in 2015 den „Queen's Award for Enterprise“ in der Kategorie „Internationaler Handel“ gewonnen haben. Ob Sie unsere umfangreichen Standardkollektionen erkunden oder Optionen für einen maßgeschneiderten Teppich besprechen wollen, wir freuen uns darauf, von Ihnen zu hören.



CONTACT US |

To learn more about our full creative flooring collection,
or to request a sample please visit our website.

WWW.HARTLEYTISSIER.COM



Ref: Greta 04 - Sisal, Greta 05 - Willow, Greta 06 - Lead

Hartley & Tissier LTD UK
24 Knightsbridge,
Business Centre Knightsbridge
Cheltenham GL51 9TA
+44 (0) 1242680346
sales@hartleytissier.com

Hartley France
87 Rue de Monceau,
75008 Paris
+33 (0) 1 53 04 06 86
paris@hartleytissier.fr

Hartley Sarl Switzerland
Rue du valentin 34 et demi,
1004 Lausanne
+41 (0) 21 218 09 46
josephine@hartleytissier.com


HARTLEY
&TISSIER